

Fleetguard[®]



CH41100 Installation Instructions



CH41100 Installation Instructions ConestaC™ Centrifugal Separator

- Take necessary precautions as engine oil, components and surfaces may be hot.
- The CH41100 is a bypass filtration device. All current full-flow filters on your engine or system should remain as they are. If a separate bypass filter is also on the engine, this unit will need to be removed and its connection plugged. (*Exception:* If the existing bypass filter is, or similar to, the large capacity bypass Fleetguard LF750 system, then leave the existing housing, remove the element and nut from the unit, and install the centrifuge downstream of the existing unit. Pre fill the existing bypass housing as normal before first start after oil drain.)
- If the engine does not have a bypass filter already, and the CH41100 is being added to the system, check the engine oil flow and pressure requirements to make sure the addition of this unit is within the acceptable limits.
- Examine the Centrifuge for any shipping damage. Determine the best location for installing the centrifuge assembly. Depending on the application, this location may be on the frame rail, on the engine or the equipment being used. Turn the engine off before starting the installation process. There are certain guidelines to follow in choosing the best location:
 1. The CH41100 unit is a gravity-drained system, so the unit must be located such that the drain line is at a steady down slope from the unit to the oil sump (one foot of drop per three feet of hose is recommended). It is recommended that the unit be at least 1' (0.3 m) above the drain return location.
 2. Make sure all hoses are clear of exhaust and all moving parts. Fasten hoses securely.
 3. The drain line must be a minimum of 1 ¼" (32 mm) ID hose, and it must be returned to the sump at a location above the oil level to assure proper drainage. The drain line must be securely connected to the larger threaded connection at the bottom of the unit using a #20 hose (SAE100R4) with male o-ring straight thread (1 5/8-12 UN) connector. There should be no U-traps, kinks or other obstructions or horizontal sections in the drain hose.
 4. The inlet line must be at least ½" (12.7 mm) ID hose, and it must be connected to the smaller of the two threaded connections at the bottom of the unit using a #8 or #10 hose with a female Seal-Lok o-ring face seal connector with 1"-14 UN/UNF threads.
 5. Inlet hose must be tightened to 22 LB-FT (30 N-M) maximum.
 6. Use an available oil supply port on the engine for the centrifuge inlet connection. Most engines provide a port to supply auxiliary devices.
 7. It may be necessary to adapt an inspection plate on the engine to accommodate the drain hose connection. The return/drain flow must be directed away from any moving parts in the crankcase.
 8. Use of the vibration isolators, provided with the CH41100 product, is recommended to reduce vibration noise.
 9. The CH41100 should be installed vertically (+/- 10 degrees) for optimum operation.
 10. Once all the connections are made, start the engine and check for any leaks. With the engine turned off, correct the situation. Restart the engine and check for proper operation.
 11. Replace the CS41005 centrifuge rotor at the same time as the full-flow filter(s) are replaced. Follow engine manufacturer's recommendations for filter service intervals.

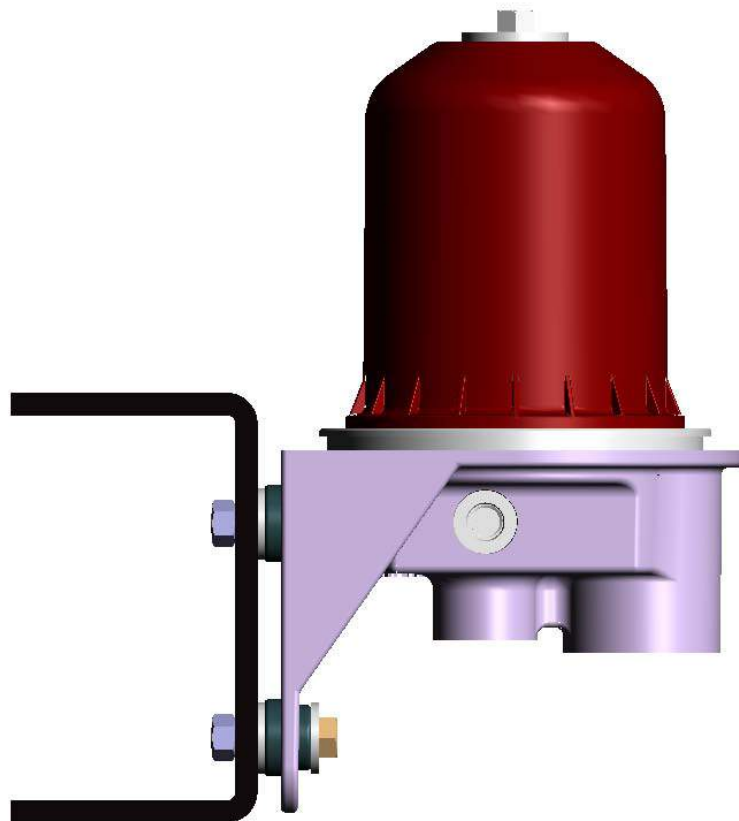
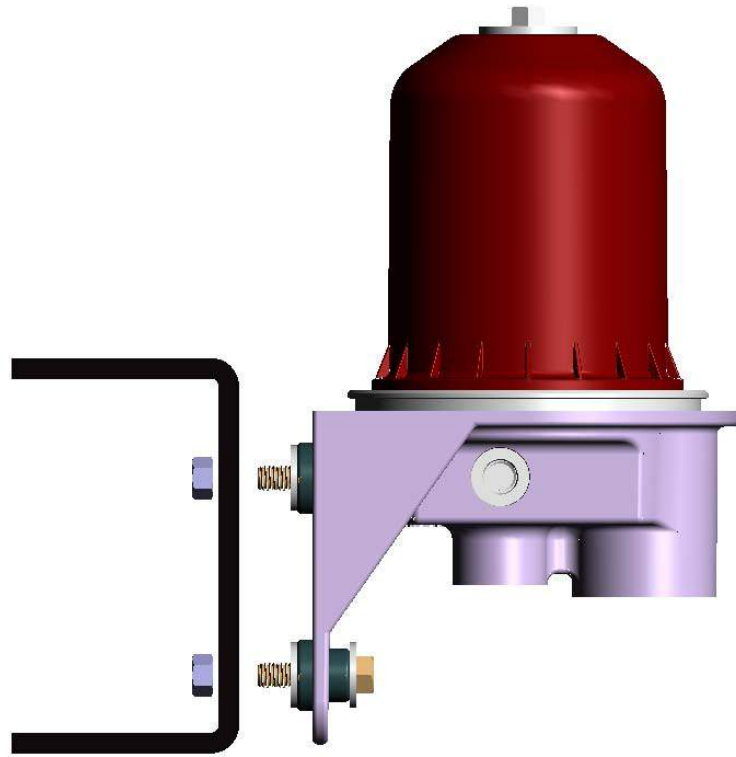


FIGURE 1. Installation to Frame Rail or Bracket

Dimensions are mm (inch)

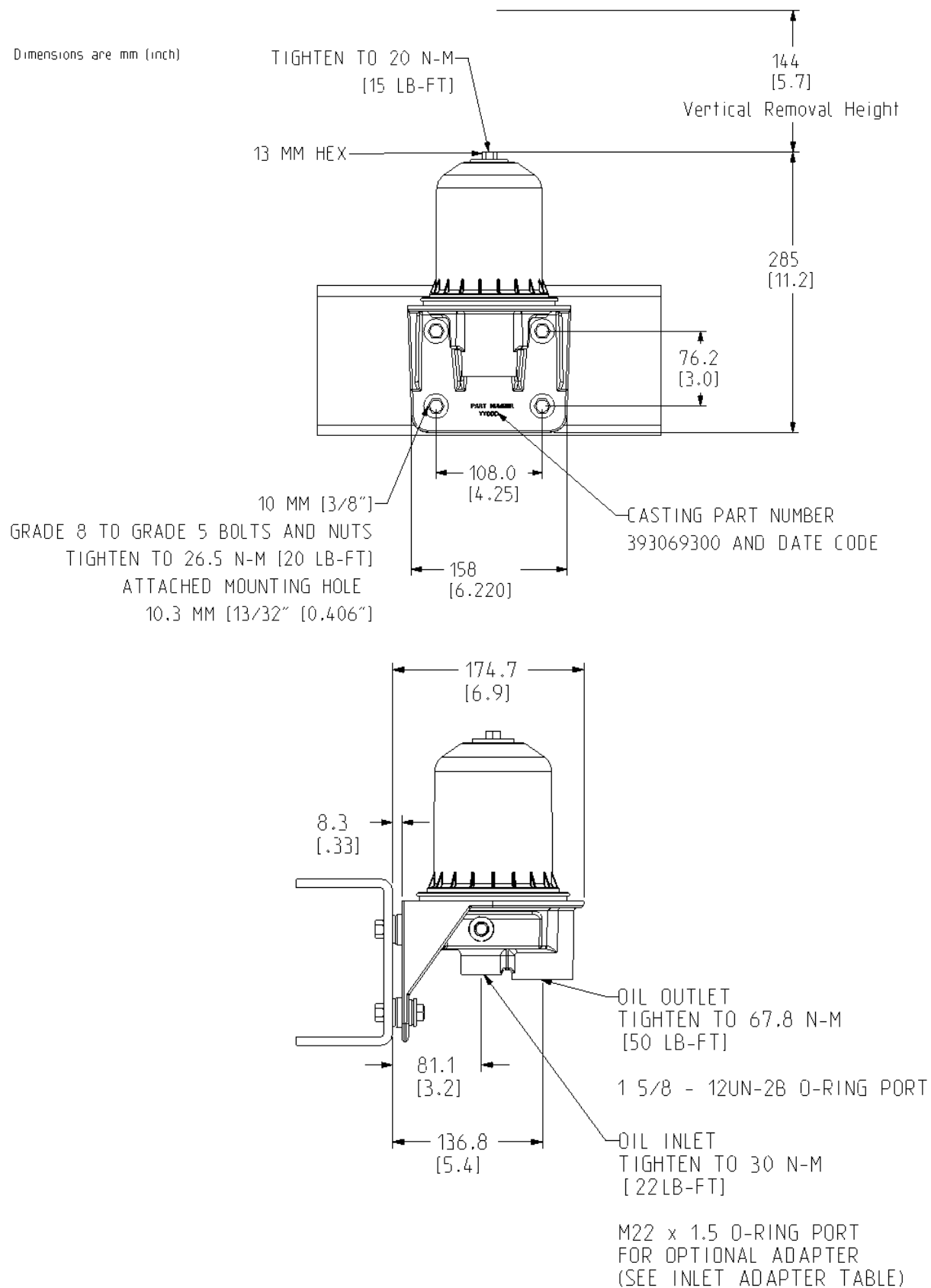
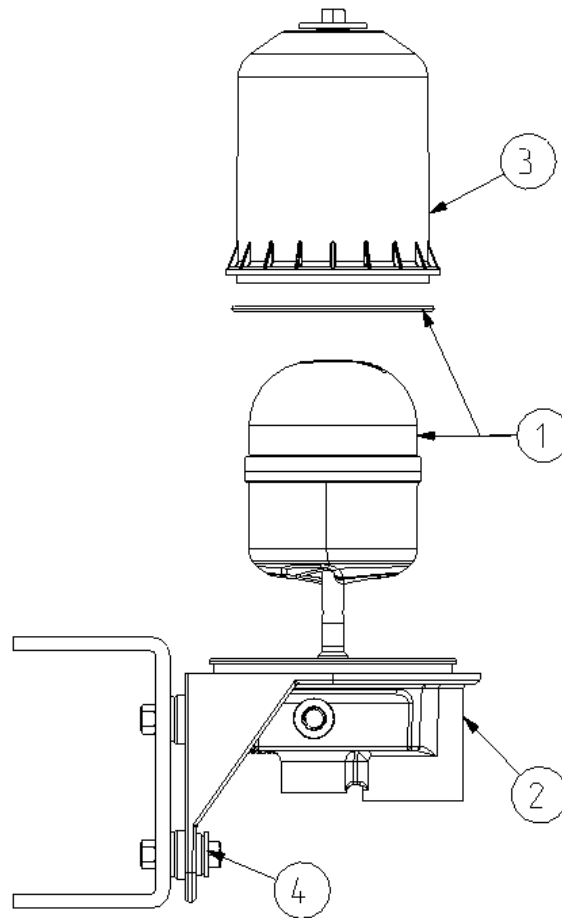


Figure 2. Installation and Removal Dimensions and Torque



ITEM	Description of Contents	Service Part Number
1	Centrifuge Rotor and Housing O-ring	CS41005
2	Base Casting and Shaft Assembly (Base Casting, Shaft, Vibration Isolators, Nuts, Bolts, and Washers)	393526200 S
3	Housing Assembly (Housing, Nut, Nut O-ring, Retaining Ring)	393526100 S
4	Vibration Isolator Kit (4Vibration Isolator, 4 Bolts, 8 Washers and 4 Nuts)	393526300 S

Table 1. Available Service Items

Part No.	Manufacture	Hose Connection Male Thread	Description
88038	Gates	JIC 7/8-14	37°Flare
88039	Gates	JIC 1 1/16-12	37°Flare
8M22F87OMLOS	Parker	Seal-Lok 13/16-16	Face Seal O-ring
10M22F87OMLOS	Parker	Seal-Lok 1-14	Face Seal O-ring
12M22F87OMLOS	Parker	Seal-Lok 1 3/16-12	Straight Face Seal O-ring
10M22V87OMLOS	Parker	Seal-Lok 1-14	45° Face Seal O-ring
M22X1.5-1/2 F80HG-S	Parker	Pipe ½-14	Straight Female Pipe
10M22C8OMXS	Parker	7/8X14	Male 90° Elbow 37°Flare
12M22C8OMXS	Parker	1-1/16X12	Male 90° Elbow 37°Flare
10M22C87OMLOS	Parker	7/8X14	Male 90° Elbow Seal-Lok
12M22C87OMLOS	Parker	1-1/16X12	Male 90° Elbow Seal-Lok

Table 2. Inlet Adapter Fittings

