

KTA50 500SE Installation Guide FH239 Fuel Module

Description	Supplier	Part Number	QTY
Fuel Module	Fleetguard	FH23912	1
Full flow lubrication filter	Fleetguard	LF9325	4
Bypass lubrication filter	Fleetguard	LF777	2
Air Filter	Fleetguard	AH1135M	2
3/8" cap screw	Fastenal	11127064	4
3/8" nut	Fastenal	11127070	4
Thread sealant	--	--	--
M33 to #16 adapter	Parker	16-20 FTX-S	1
1/2" plug	Parker	HP50N-S	1
1-1/4" to 1" NPT reducer	Parker	1 1/4 x 1 PTR	1
1" NPT to #12 adapter	Parker	12-16 CTX	1
1-1/4" to 1" NPT adapter	Parker	1 1/4 x 1 PTR	1
Custom #16 fuel line	24" total length End 1) #16 JIC female End 2) 1-1/2" NPTF male		1
5/8" cap screw*	Fastenal	19861	2
5/8" nut*	Fastenal	11127072	2
Fuel module bracket**	Custom made	-	1

*If a fuel module is already used on the genset a new bracket, 5/8" cap screws, and 5/8" nuts, may not be required.

**Fuel module bracket should be made of 3/8" plate steel or equivalent.

Fuel Filtration-

1. Locate the dual FS1006 filter head on the left bank of the engine (see figure 1).
2. Disconnect fuel lines from the inlet/outlet of the FS1006 filter head.
3. Remove the dual FS1006 head and discard.
4. Modify existing fuel module bracket or custom make new bracket to accept FH239.
5. If making a custom bracket, drill 2 or more holes in the skid frame with 11/16 drill bit using bracket as a template (see figure 2).
6. Mount the fuel module bracket to the frame using 2 grade 8 bolts and nuts.
7. Bolt the FH239 to the fuel module bracket using 3/8" cap screws and nuts.
8. Ensure the inlet/outlet of the FH239 are in the desired location. The inlet and/or outlet can be located on the left or the right hand side. The supplied FH239 is an in right, out left model. For more information see the FH239 installation instructions that come in the box.
9. Remove the inlet fuel line and fitting from fuel module on front of engine and discard.

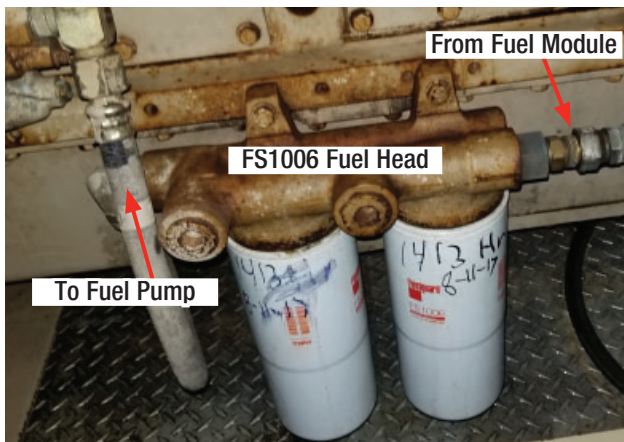


Figure 1: Before 500 SE Upgrade

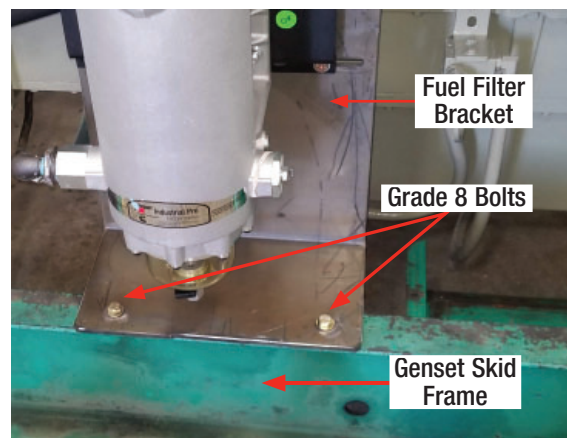


Figure 2: Fuel Filter Bracket

10. Replace fitting with M33 to #16 adapter on fuel module outlet (see figure 3 for steps 11-13).
11. Install 1 ¼" x 1" pipe thread reducer fitting to the FH239 inlet. Use thread sealant on the NPT threads.
12. Install new line from fuel cooler to FH239 inlet. Use thread sealant on the NPT threads.
13. Install NPT thread reducer and adapter to #12 on FH239 outlet. Use thread sealant on all NPT threads.

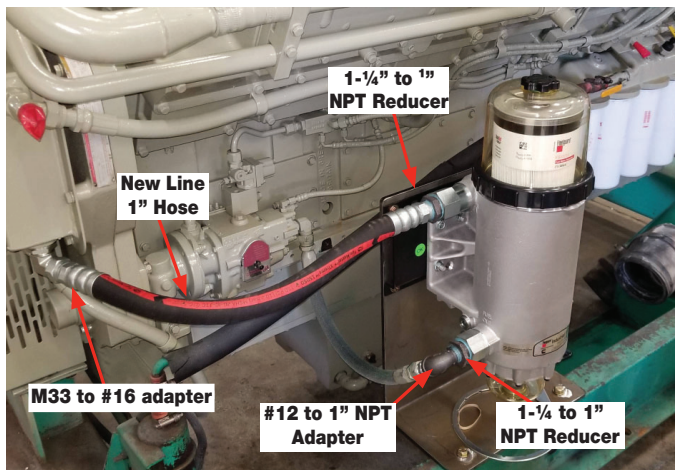


Figure 3: After 500 SE Upgrade

14. Connect existing line from fuel pump to FH239 outlet.
15. Remove the WIF sensor from the housing body (see figure 4) and plug using ½-20 SAE ORB.
16. Connect the existing fuel filter outlet hoses to the FH239.
17. Place the FH239 service wrench in the container near the other service tools/fluids.



Figure 4: FH239 Fuel Module

Air Intake System

1. Loosen brackets and clamps to remove air filters.
2. Remove and replace air filters with AH1135M.

Lubrication System

1. Replace current LF3325 filters with new LF9325 filters.
2. Replace LF777 filters with new filters.

Add 500SE label provided in the kit near service record label and fill in appropriate part numbers (see Figure 5).



Figure 5: 500 SE Label



Filtration

For more information, visit

cumminsfiltration.com

LT36664 Rev A

©2018 Cummins Filtration Inc.

Printed in the U.S.A.