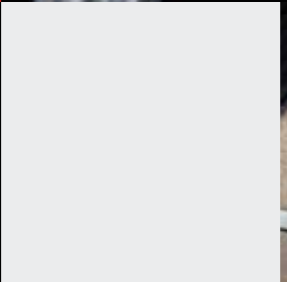
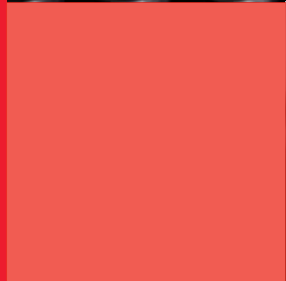




Projetados **para atender**

Ou exceder os requerimentos de performance de todos os fabricantes de máquinas e equipamentos originais (OEM), e com uma cobertura de aplicações incomparável no mercado, os produtos Fleetguard abrem um mundo de oportunidades para que seus distribuidores possam atender aos seus clientes de uma maneira completa e na totalidade de suas necessidades de filtração.



Produtos Fleetguard

Índice

- 04** Agrale
- 06** Ford
- 10** Foton
- 12** International
- 14** Iveco
- 16** Man
- 18** Mercedes-Benz
- 28** Scania
- 32** Shacman
- 34** Volkswagen
- 38** Volvo

Produtos Fleetguard AGRALE



Modelo	Ano	Motor	Filtro de Ar				Filtro Separador de Combustível		Filtro de Combustível		Filtro Lubrificante	
			Elemento Primário		Elemento Secundário		Número Agrale	Número Fleetguard	Número Agrale	Número Fleetguard	Número Agrale	Número Fleetguard
			Número Agrale	Número Fleetguard	Número Agrale	Número Fleetguard						
1600 DRD (2.8 L 6V SOHV L3)	1986-89	D 229-3 MWM	-	-	-	-	600 7006311004	FS19996	700 6011098001	FS1221	600 3001068004	-
1600 DRS (2.8 L 6V SOHV L3)	1984-85	D 229-3 MWM	-	-	-	-	-	-	6003.001.048.00.6	FF4141	600 3001068004	-
1800 DR/DRD (3.0 L 8V SOHV L4)	1988-96	D 229-4 MWM	600 6001345009	AF4135	600 6001346007	AF4522	-	-	6003.001.048.00.6	FF4141	600 3001068004	-
1800 DR/DRD (3.0 L 8V SOHV L4)	1988-96	D 229-4 MWM	600 6001345009	AF4135	-	-	-	-	-	-	-	-
4000 D	1985 →	MWM D229/4 Diesel	-	-	600 6001346007	AF4522	-	-	6003.001.048.00.6	FF4141	600 3001068004	-
4500	1994 →	MWM D229/4	-	-	-	-	-	-	-	-	600 3001068004	-
5000 D	1994 →	MWM D229/4 Diesel	-	-	600 6001346007	AF4522	-	-	-	-	600 3001068004	-
5000 RD	1994 →	MWM D229/4	600 6001345009	AF4135	600 6001346007	AF4522	-	-	6003.001.048.00.6	FF4141	-	-
6000 (RS/RD/CD)	2000 →	2.8MWM Sprint4.07TCA	600 7001743003	-	600 7001744001	-	600 8006040007	FS1105	600 7001619005	-	600 8001204004	-
9200 E-MEC	2003 →	MWM 4.10 TCA	600 7001743003	-	600 7001744001	-	600 7006311004	FS19996	600 7001619005	-	-	-
9201 E-Tronic	2006 →	MWM 4.12 TCE	600 7001743003	-	600 7001744001	-	611 2777018003	-	-	-	-	-
AM 100-E (6011.000.120.00.7) Marrua	2013	ISF 2.8L	601 5001014002	-	601 5001015009	-	-	-	-	-	600 8001204004	-
AM 150-E 2.8 12V (6011.000.123.00.1) Marrua	2013	ISF 2.8L	601 5001014002	-	601 5001015009	-	-	-	-	-	600 8001204004	-
AM 200-E 2.8 12V (6011.000.115.00.7) Marrua	2013	ISF 2.8L	601 5001014002	-	601 5001015009	-	-	-	-	-	600 8001204004	-
Cargo (4WDM) (6011.000.005.00.0) Marrua	2012	MWM Sprint 4.07 TCA	-	-	-	-	-	-	-	-	600 8001204004	-
Furgovan 6000	2002-05	2.8 MWM Sprint4.07TCA	600 7001743003	-	600 7001744001	-	-	-	-	-	600 8001204004	-
Furgovan 6000 E	2002-05	2.8 MWM Sprint4.07TCE	600 7001743003	-	600 7001744001	-	611 2006018003	-	600 3006009002	-	600 8001204004	-
Furgovan 6000 E	2005	MWM 4.08 TCE	600 7001743003	-	600 7001744001	-	611 2777018003	-	600 3006009002	-	600 8001204004	-
Furgovan 6000 E	2002-05	2.8 MWM Sprint4.07TCE	600 7001743003	-	600 7001744001	-	-	-	-	-	-	-
Furgovan 6000 E	2005	MWM 4.08 TCE	600 7001743003	-	600 7001744001	-	-	-	-	-	-	-
Furgovan 8000	2003 →	MWM 4.10 TCA	600 7001743003	-	600 7001744001	-	600 7006311004	FS19996	600 8001204004	-	905 411880008	LF3687
Furgovan 8500	1998-06	MWM 4.10 TCA	-	-	-	-	-	-	-	-	-	-

AGRALE

FORD

FOTON

INTERNATIONAL

IVECO

MAN

MERCEDES-BENZ

SCANIA

SHACMAN

VOLKSWAGEN

VOLVO

Produtos Fleetguard FORD



Modelo	Ano	Motor	Filtro de Ar				Filtro Separador de Combustível		Filtro de Combustível		Filtro Lubrificante		Filtro da Direção Hidráulica		Filtro Secador de Freio	
			Elemento Primário		Elemento Secundário		Número Ford	Número Fleetguard	Número Ford	Número Fleetguard	Número Ford	Número Fleetguard	Número Ford	Número Fleetguard	Número Ford	Número Fleetguard
			Número Ford	Número Fleetguard	Número Ford	Número Fleetguard										
1317 (5.9)	2002 →	Cummins 6B	BG1X9601AA	AF27978	-	-	4C459N074AA	FS1015	BF8T9155DA	FF5052	BG2X6731AA	LF3806	T11145397	HF6162	BG9X351AA	AF27817
1317 E (3.9)	2005 →	Cummins Int. 4 ISBE	BG1X9601AA	AF27978	-	-	4C459N074AA (2005-2010) BH5X9N074AA (2010-2011)	FS1015 (2005-2010) FS1106 (2010-2011)	BG5X9155AA	FF5421	BG5X 6731AA	LF16015	T11145397	HF6162	BG9X351AA	AF27817
1517 (5.9)	2002 →	Cummins 6BTAA	BG1X9601AA	AF27978	-	-	4C459N074AA	FS1015	BF8T9155DA	FF5052	BG2X6731AA	LF3806	T11145397	HF6162	BG9X351AA	AF27817
1517 E (3.9)	2005 →	Cummins Int. 4 ISBE	BG1X9601AA	AF27978	-	-	4C459N074AA (2005-2010) BH5X9N074AA (2010-2011)	FS1015 (2005-2010) FS1106 (2010-2011)	BG5X9155AA	FF5421	BG5X 6731AA	LF16015	T11145397	HF6162	BG9X351AA	AF27817
1521 (5.9)	2001 →	Cummins 6BTAA	BG1X9601AA	AF27978	-	-	4C459N074AA	FS1015	BF8T9155DA	FF5052	BG2X6731AA	LF3806	T11145397	HF6162	BG9X351AA	AF27817
1717 (5.9)	2002 →	Cummins 6BTAA	BG1X9601AA	AF27978	-	-	4C459N074AA	FS1015	BF8T9155DA	FF5052	BG2X6731AA	LF3806	T11145397	HF6162	BG9X351AA	AF27817
1717 E (3.9)	2005 →	Cummins Int. 4 ISBE	BG1X9601AA	AF27978	-	-	4C459N074AA (2005-2010) BH5X9N074AA (2010-2011)	FS1015 (2005-2010) FS1106 (2010-2011)	BG5X9155AA	FF5421	BG5X 6731AA	LF16015	T11145397	HF6162	BG9X351AA	AF27817
1722 (5.9)	2001-06	Cummins 6BTAA	BG1X9601AA	AF27978	-	-	4C459N074AA	FS1015	BG5X9155AA	FF5052	BG2X6731AA	LF3806	T11145397	HF6162	BG9X351AA	AF27817
1722 E (5.9)	2006 →	Cummins Int. 6 ISBE	BG1X 9601BA	AF25997	BG1X 9E673 BA	AF26211	4C459N074AA (2005-2010) BH5X9N074AA (2010-2011)	FS1015 (2005-2010) FS1106 (2010-2011)	BG5X9155AA	FF5421	BG5X 6731AA	LF16015	T11145397	HF6162	BG9X351AA	AF27817
1722 MAX TON (8.3)	2001 →	Cummins 6CTAA	BG1X 9601BA	AF25997	BG1X 9E673 BA	AF26211	4C459N074AA	FS1015	BF8T9155DA	FF5052	TJG115561	LF3000	T11145397	HF6162	BG9X351AA	AF27817
1731 MAX TON (8.3)	2001 →	Cummins 6CTAA	BG1X 9601BA	AF25997	BG1X 9E673 BA	AF26211	4C459N074AA	FS1015	BF8T9155DA	FF5052	TJG115561	LF3000	T11145397	HF6162	BG9X351AA	AF27817
2421 (5.9)	2005-06	Cummins 6BTAA	BG1X 9601BA	AF25997	BG1X 9E673 BA	AF26211	4C459N074AA	FS1015	BF8T9155DA	FF5052	BG2X6731AA	LF3806	T11145397	HF6162	BG9X351AA	AF27817
2422 (8.3)	1991-06	Cummins 6CTAA	BG1X 9601BA	AF25997	BG1X 9E673 BA	AF26211	4C459N074AA	FS1015	BF8T9155DA	FF5052	BG2X6731CA	LF9009	T11145397	HF6162	BG9X351AA	AF27817
2422 E (5.9)	2006 →	Cummins Int. 6 ISBE	BG1X 9601BA	AF25997	BG1X 9E673 BA	AF26211	-	-	BG5X9155AA	FF5421	BG5X6731AA	LF16015	T11145397	HF6162	BG9X351AA	AF27817
2422 MAX TON (8.3)	2003 →	Cummins 6CTAA	BG1X 9601BA	AF25997	BG1X 9E673 BA	AF26211	4C459N074AA	FS1015	BF8T9155DA	FF5052	TJG115561	LF3000	T11145397	HF6162	BG9X351AA	AF27817
2428 E (5.9)	2006 →	Cummins Int. 6 ISBE	BG1X9601BA	AF25997	BG1X 9E673 BA	AF26211	4C459N074AA (2005-2010) BH5X9N074AA (2010-2011)	FS1015 (2005-2010) FS1106 (2010-2011)	BG5X9155AA	FF5421	BG5X 6731AA	LF16015	T11145397	HF6162	BG9X351AA	AF27817
2622 E (5.9)	2006 →	Cummins Int. 6 ISBE	BG1X9601BA	AF25997	BG1X 9E673 BA	AF26211	4C459N074AA (2005-2010) BH5X9N074AA (2010-2011)	FS1015 (2005-2010) FS1106 (2010-2011)	BG5X9155AA	FF5421	BG5X 6731AA	LF16015	T11145397	HF6162	BG9X351AA	AF27817
2622 MAX TON (8.3)	1991-06	Cummins 6CTAA	BG1X9601BA	AF25997	BG1X 9E673 BA	AF26211	4C459N074AA	FS1015	BF8T9155DA	FF5052	TJG115561	LF3000	T11145397	HF6162	BG9X351AA	AF27817
2626 (8.3)	1993-06	Cummins 6CTAA	BG1X9601BA	AF25997	BG1X 9E673 BA	AF26211	4C459N074AA	FS1015	BF8T9155DA	FF5052	TJG115561	LF3000	T11145397	HF6162	BG9X351AA	AF27817
2628 E (5.9)	2006 →	Cummins Int. 6 ISBE	BG1X9601BA	AF25997	BG1X 9E673 BA	AF26211	4C459N074AA (2005-2010) BH5X9N074AA (2010-2011)	FS1015 (2005-2010) FS1106 (2010-2011)	BG5X9155AA	FF5421	BG5X 6731AA	LF16015	T11145397	HF6162	BG9X351AA	AF27817
2631 MAX TON (8.3)	1997-06	Cummins 6CTAA	BG1X9601BA	AF25997	BG1X 9E673 BA	AF26211	4C459N074AA	FS1015	BF8T9155DA	FF5052	TJG115561	LF3000	T11145397	HF6162	BG9X351AA	AF27817
2632 E (8.3)	2006 →	Cummins ISCE	BG1X9601BA	AF25997	BG1X 9E673 BA	AF26211	-	-	BG6X9155AA	FF5488	BG2X6731CA	LF9009	T11145397	HF6162	BG9X351AA	AF27817
2831 (8.3)	2005-06	Cummins 6CTAA	BG1X9601BA	AF25997	BG1X 9E673 BA	AF26211	4C459N074AA	FS1015	BF8T9155DA	FF5052	TJG115561	LF3000	T11145397	HF6162	BG9X351AA	AF27817
2932 E (8.3)	2006 →	Cummins ISCE	BG1X9601BA	AF25997	BG1X 9E673 BA	AF26211	-	-	BG6X9155AA	FF5488	BG2X6731CA	LF9009	T11145397	HF6162	BG9X351AA	AF27817
3222 MAX TON (8.3)	2002-06	Cummins 6CTAA	BG1X9601BA	AF25997	BG1X 9E673 BA	AF26211	4C459N074AA	FS1015	BF8T9155DA	FF5052	TJG115561	LF3000	T11145397	HF6162	BG9X351AA	AF27817
712 E	2007-11	Cummins Int. 4 ISBE	BH3X9601AA	AF25075	-	-	-	-	BG5X9155AA	FF5421	BG5X 6731AA	LF16015	T11145397	HF6162	BG9X351AA	AF27817
815 E (3.9)	2005 →	Cummins Int. 4 ISBE	BH3X9601AA	AF25075	-	AF1840	4C459N074AA (2005-2010) BH5X9N074AA (2010-2011)	FS1015 (2005-2010) FS1106 (2010-2011)	BG5X9155AA	FF5421	BG5X 6731AA	LF16015	T11145397	HF6162	BG9X351AA	AF27817
915 (3.9)	2002 →	Cummins 4B	BH3X9601AA	AF25075	-	AF1840	-	-	BF8T9155DA	FF5052	BF5T6731BA	LF3345	T11145397	HF6162	BG9X351AA	AF27817

AGRALE

FORD

FOTON

INTERNATIONAL

IVECO

MAN

MERCEDES-BENZ

SCANIA

SHACMAN

VOLKSWAGEN

VOLVO

Produtos Fleetguard FORD



Modelo	Ano	Motor	Filtro de Ar				Filtro Separador de Combustível		Filtro de Combustível		Filtro Lubrificante		Filtro de Ureia		Filtro da Direção Hidráulica		Filtro Secador de Freio	
			Elemento Primário		Elemento Secundário		Número Ford	Número Fleetguard	Número Ford	Número Fleetguard	Número Ford	Número Fleetguard	Número Ford	Número Fleetguard	Número Ford	Número Fleetguard	Número Ford	Número Fleetguard
			Número Ford	Número Fleetguard	Número Ford	Número Fleetguard												
C-816	2014 →	Cummins ISB 4.5L	BG9X 9601 CA	AF27976	-	-	BH4X 9N074 AA	FS20026	BH1X9155AA	FF5612	BG5X 6731AA	LF16015	BH1X 9176 AA	AS2500	T11145397	HF6162	BG9X351AA	AF27817
C-816	2012-14	Cummins ISB 4.5L	BG9X9601CA	AF27976	-	-	BH1X9N074 AA (2012-2013) BH4X9N074AA(2014)	FS1070S (2012-2013) FS20026 (2014)	BH1X9155AA	FF5612	BG5X6731AA	LF16015	BH1X9176AA	AS2500	T11145397	HF6162	BG9X351AA	AF27817
C-1119	2014	Cummins ISBe	BG1X 9601 AA	AF27978	-	-	BH4X 9N074 AA	FS20026	BH1X9155AA	FF5612	BG5X6731AA	LF16015	BH1X 9176 AA	AS2500	T11145397	HF6162	BG9X351AA	AF27817
C-1119 / C-1319 / C-1519 / C-1719	2012-14	Cummins ISB 4.5L	BG1X 9601 AA	AF27978	-	-	BH1X9N074 AA (2012-2013) BH4X9N074AA(2014)	FS1070S (2012-2013) FS20026 (2014)	BH1X9155AA	FF5612	BG5X6731AA	LF16015	BH1X9176AA	AS2500	T11145397	HF6162	BG9X351AA	AF27817
C-1319	2014	Cummins ISBe	BG1X 9601 AA	AF27978	-	-	BH4X 9N074 AA	FS20026	BH1X9155AA	FF5612	BG5X 6731AA	LF16015	BH1X 9176 AA	AS2500	T11145397	HF6162	BG9X351AA	AF27817
C-1519	2014	Cummins ISBe	BG1X 9601 AA	AF27978	-	-	BH4X 9N074 AA	FS20026	BH1X9155AA	FF5612	BG5X 6731AA	LF16015	BH1X 9176 AA	AS2500	T11145397	HF6162	BG9X351AA	AF27817
C-1719	2014	Cummins ISBe	BG1X 9601 AA	AF27978	-	-	BH4X 9N074 AA	FS20026	BH1X9155AA	FF5612	BG5X 6731AA	LF16015	BH1X 9176 AA	AS2500	T11145397	HF6162	BG9X351AA	AF27817
C-1723	2014	Cummins ISBe	BG1X 9601 BA	AF25997	BG1X 9E673 BA	AF26211	BH4X 9N074 AA	FS20026	BH1X9155AA	FF5612	BG5X 6731AA	LF16015	BH1X 9176 AA	AS2500	T11145397	HF6162	BG9X351AA	AF27817
C-1723 / C-1729 / C-2423 / C-2429 / C-2623 / C-2629	2012-14	Cummins ISB 4.5L Cummins ISB 6.7L	BG1X9601BA	AF25997	BG1X9E673BA	AF26211	BH1X9N074AA (2012-2013) BH4X9N074AA(2014)	FS1070S (2012-2013) FS20026 (2014)	BH1X9155AA	FF5612	BG5X6731AA	LF16015	BH1X9176AA	AS2500	T11145397	HF6162	BG9X351AA	AF27817
C-1729	2014	Cummins ISBe	BG1X 9601 BA	AF25997	BG1X 9E673 BA	AF26211	BH4X 9N074 AA	FS20026	BH1X9155AA	FF5612	BG5X 6731AA	LF16015	BH1X 9176 AA	AS2500	T11145397	HF6162	BG9X351AA	AF27817
C-1933	2014	Cummins ISL 8.9L	BG1X 9601 BA	AF25997	BG1X 9E673 BA	AF26211	BH4X 9N074 AA	FS20026	BG6X9155AA	FF5488	BG2X6731CA	LF9009	BH1X 9176 AA	AS2500	T11145397	HF6162	BG9X351AA	AF27817
C-1933	2012-14	Cummins ISL 8.9L	BG1X9601BA	AF25997	BG1X9E673BA	AF26211	BH1X9N074 AA (2012-2013) BH4X9N074AA(2014)	FS1070S (2012-2013) FS20026 (2014)	BG6X9155AA	FF5488	BG2X6731CA	LF9009	BH1X9176AA	AS2500	T11145397	HF6162	BG9X351AA	AF27817
C-2042/ C-2842	2013 →	FPT 10.3L	DC469601AA	-	DC469601BB	-	BH5X9N074 AA	FS1106	BH2X9155AA	FF5471	DC463N692AA	-	-	-	T11145397	HF6162	BG9X351AA	AF27817
C-2423	2014	Cummins ISBe	BG1X 9601 BA	AF25997	BG1X 9E673 BA	AF26211	BH4X 9N074 AA	FS20026	BH1X9155AA	FF5612	BG5X 6731AA	LF16015	BH1X 9176 AA	AS2500	T11145397	HF6162	BG9X351AA	AF27817
C-2429	2014	Cummins ISBe	BG1X 9601 BA	AF25997	BG1X 9E673 BA	AF26211	BH4X 9N074 AA	FS20026	BH1X9155AA	FF5612	BG5X 6731AA	LF16015	BH1X 9176 AA	AS2500	T11145397	HF6162	BG9X351AA	AF27817
C-2623	2014	Cummins ISBe	BH1X 9601 AA	AF27977	BH1X 9E673 AA	-	BH4X 9N074 AA	FS20026	BH1X9155AA	FF5612	BG5X 6731AA	LF16015	BH1X 9176 AA	AS2500	T11145397	HF6162	BG9X351AA	AF27817
C-2623 / C-2629	2012-14	Cummins ISB 6.7L	BH1X9601AA	AF27977	BH1X9E673AA	-	BH1X9N074 AA (2012-2013) BH4X9N074AA(2014)	FS1070S (2012-2013) FS20026 (2014)	BH1X9155AA	FF5612	BG5X6731AA	LF16015	BH1X9176AA	AS2500	T11145397	HF6162	BG9X351AA	AF27817
C-2629	2014	Cummins ISBe	BH1X 9601 AA	AF27977	BH1X 9E673 AA	-	BH4X 9N074 AA	FS20026	BH1X9155AA	FF5612	BG5X 6731AA	LF16015	BH1X 9176 AA	AS2500	T11145397	HF6162	BG9X351AA	AF27817
C-3133	2014	Cummins ISL 8.9L	BH1X 9601 AA	AF27977	BH1X 9E673 AA	-	BH4X 9N074 AA	FS20026	BG6X9155AA	FF5488	BG2X6731CA	LF9009	BH1X 9176 AA	AS2500	T11145397	HF6162	BG9X351AA	AF27817
C-3133	2012-14	Cummins ISL 8.9L	BH1X9601AA	AF27977	BH1X9E673AA	-	BH1X9N074 AA (2012-2013) BH4X9N074AA(2014)	FS1070S (2012-2013) FS20026 (2014)	BG6X9155AA	FF5488	BG2X6731CA	LF9009	BH1X9176AA	AS2500	T11145397	HF6162	BG9X351AA	AF27817
F-4000 F-350	2014	Cummins ISF 2.8L	BG9X9601CA	AF27976	-	-	BH4T9155AA	FS53028	-	-	BG5X6731AA	LF16015	BH1X9176AA	AS2500	T11145397	HF6162	BG9X351AA	AF27817

AGRALE

FORD

FOTON

INTERNATIONAL

IVECO

MAN

MERCEDES-BENZ

SCANIA

SHACMAN

VOLKSWAGEN

VOLVO

Produtos Fleetguard
FOTON



Modelo	Ano	Motor	Filtro de Ar Elemento Primário		Filtro Separador de Combustível		Filtro de Combustível		Filtro Lubrificante	
			Número Foton	Número Fleetguard	Número Foton	Número Fleetguard	Número Foton	Número Fleetguard	Número Foton	Número Fleetguard
Aumark 2000	2012 →	ISF 2.8L	AF26509	AF26509	11059115000/ WBF1212	FS1212	5268019	FS36209	5266016	LF17356
Aumark 3000	2012 →	ISF 2.8L	AF26509	AF26509	11059115000/ WBF1212	FS1212	5268019	FS36209	5266016	LF17356
Aumark 4000	2012 →	ISF 3.8L	0026KL223019	-	Raccor R90T	FS19551/ FS19933	5262311	FF5706	5262313	LF16352
Aumark 5000	2012 →	ISF 3.8L	0026KL223019	-	Raccor R90T	FS19551/ FS19934	5262311	FF5706	5262313	LF16352
Aumark 6000	2012 →	ISF 3.8L	0026KL223019	-	Raccor R90T	FS19551/ FS19935	5262311	FF5706	5262313	LF16352
Aumark 7000	2012 →	ISF 3.8L	0026KL223019	-	Raccor R90T	FS19551/ FS19936	5262311	FF5706	5262313	LF16352

AGRALE

FORD

FOTON

INTERNATIONAL

IVECO

MAN

MERCEDES-BENZ

SCANIA

SHACMAN

VOLKSWAGEN

VOLVO

Produtos Fleetguard INTERNATIONAL



Modelo	Ano	Motor	Filtro Separador de Combustível		Filtro de Combustível		Filtro Lubrificante		Filtro de Ar (Elemento Primário)		Filtro de Ar-Condicionado		Filtro da Direção Hidráulica	
			Número International	Número Fleetguard	Número International	Número Fleetguard	Número International	Número Fleetguard	Número International	Número Fleetguard	Número International	Número Fleetguard	Número International	Número Fleetguard
9800 Series	2010 →	Cummins ISM	-	FS19764	-	-	-	LF9080 LF14000NN	-	AF25685	-	-	-	-
Paystar	2010 →	MAXX FORCE 15	3004473C92	FS19869	3004474C91	FF73100	-	-	-	-	-	-	-	-
Paystar	2011 →	MAXX FORCE 15	2602549C1	FS20040	-	-	3006874C1	-	-	-	-	-	-	-
Prostar	2010 →	MAXX FORCE 11	2588149C1	FS19624	3004474C91	FF73100	3007543C91	-	-	-	-	-	-	-
RXT	2009 →	MAXX FORCE 9	1878042C91	FS19947	-	-	1842639C91	LF9025	-	-	-	-	-	-
Terrastar	2010-11	MAXX FORCE 7	1878042C91	FS19947	1873910C91	FF275	1840752C91	LF16166	-	-	-	-	-	-
Terrastar	2012 →	MAXX FORCE 7	1878042C91	FS19947	1873910C91	FF275	1840752C91	LF16166	-	-	-	-	-	-
Workstar	2007-09	MAXX FORCE 13	2588149C1	FS19624	3004474C91	FF73100	-	-	-	-	-	-	-	-

AGRALE

FORD

FOTON

INTERNATIONAL

IVECO

MAN

MERCEDES-BENZ

SCANIA

SHACMAN

VOLKSWAGEN

VOLVO

Produtos Fleetguard IVECO



Modelo	Ano	Motor	Filtro de Ar				Filtro Separador de Combustível		Filtro de Combustível		Filtro Lubrificante		Filtro de Ar-Condicionado		Filtro da Direção Hidráulica		Filtro Secador de Freio	
			Elemento Primário		Elemento Secundário		Número Iveco	Número Fleetguard	Número Iveco	Número Fleetguard	Número Iveco	Número Fleetguard	Número Iveco	Número Fleetguard	Número Iveco	Número Fleetguard	Número Iveco	Número Fleetguard
			Número Iveco	Número Fleetguard	Número Iveco	Número Fleetguard												
120 E 15	1999 →	Iveco 8060.25V	7140555	AF25065	7149135	AF1841	7147701	-	1930010	FF5135	1902047 1902046	LF3481	-	-	1902137	HF6162	-	-
150 E 18	1991 →	Iveco 8060.25V	7140555	AF25065	7149135	AF1841	7146716	-	1930010	FF5135	1902047 1902046	LF3481	-	-	1902137	HF6162	-	-
160 E 21	1998 →	Iveco 8060.45V	7140555 503104436	AF25065 AF323	7149135 -	AF1841 -	7146716	-	1902138	-	1902047 1902046	LF3481	-	-	1902137	HF6162	2TB607439	AF27817
170 E 21	2004 →	MWM 6.10TCA	7140555 503104436	AF25065 AF323	7149135 -	AF1841 -	-	-	-	-	-	-	-	-	1902137	HF6162	2TB607439	AF27817
170 E 22	2004 →	Tector F4AE0681D	7140555 503104436	AF25065 AF323	7149135 -	AF1841 -	7146716	-	2992241	FF5936	2992242	LF17516	-	-	1902137	HF6162	2TB607439	AF27817
170 E 25	2009 →	Tector 6 cilindros	503104436	AF323	503106176	-	1908547	FS1254	2992241	FF5936	2992242	LF17516	-	-	-	-	-	-
170 E 25T	2009 →	Tector 6 cilindros	503104436	AF323	503106176	-	1908547	FS1254	2992241	FF5936	2992242	LF17516	-	-	-	-	2TB607439	AF27817
230 E 22	2005 →	Tector F4AE0681D	7140555 503104436	AF25065 AF323	7149135 -	AF1841 -	7146716	-	2992241	FF5936	2992242	LF17516	-	-	1902137	HF6162	2TB607439	AF27817
230 E 24	2005 →	Tector F4AE0681D	7140555 503104436	AF25065 AF323	7149135 -	AF1841 -	7146716	-	2992241	FF5936	2992242	LF17516	-	-	1902137	HF6162	2TB607439	AF27817
240 E 25	2009 →	Tector 6 cilindros	503104436	AF323	503106176	-	1908547	FS1254	2992241	FF5936	2992242	LF17516	-	-	-	-	2TB607439	AF27817
240 E 25 S	2009 →	Tector 6 cilindros	503104436	AF323	503106176	-	1908547	FS1254	2992241	FF5936	2992242	LF17516	-	-	-	-	2TB607439	AF27817
260 E 25	2009 →	Tector 6 cilindros	503104436	AF323	503106176	-	1908547	FS1254	2992241	FF5936	2992242	LF17516	-	-	-	-	2TB607439	AF27817
380 E 37H	2004 →	8210-42K	-	-	-	-	7147701	-	1930010	FF5135	1902102	-	-	-	1902137	HF6162	-	-
380 T38	2004 →	Cursor 13 F3BE0681G	-	-	-	-	7147701	-	-	-	-	-	-	-	1902137	HF6162	-	-
450 E 32T	2006 →	Cursor 8 7.8L	503104436	AF323	-	-	2992662	FS19821	-	-	-	-	-	-	-	-	-	-
450 E 33T (4x2)	2009 →	Cursor 8 Turbo Intercooler	503104436	AF323	-	-	7146716	-	503120784	FS1254	2992242	LF16015	-	-	-	-	-	-
450 E 37 T	1999 →	8210-42K	-	-	-	-	7147701	-	-	-	1902102	-	-	-	1902137	HF6162	-	-
450 E 37T	1998 →	8210-42K	1904550	AF1802	1905620	AF4523	7147701	-	1930010	FF5135	1902102	-	-	-	1902137	HF6162	-	-
720 E 42HT	2006 →	Cursor 13 F3BE0681G	-	-	-	-	7147701	-	-	-	-	-	-	-	1902137	HF6162	-	-
HD 380	2006 →	Cursor 13 F3BE0681G	1907695	AF25235	-	-	2992662	FS19821	500315480	FF5471	-	-	2995964	AF26146	1902137	HF6162	-	-
HD 450 E38	2005 →	Cursor 13 F3BE0681G	-	-	-	-	2992662	FS19821	500315480	FF5471	-	-	2995964	AF26146	1902137	HF6162	-	-
HD 450 S38T	2005 →	Cursor 13 F3BE0681G	1907695 2996126	AF25235 AF26241	-	-	2992662	FS19821	500315480	FF5471	-	-	2995964	AF26146	1902137	HF6162	-	-
HD 450 S42T	2005 →	Cursor 13 F3BE0681V	1907695 2996126	AF25235 AF26241	-	-	2992662	FS19821	500315480	FF5471	-	-	2995964	AF26146	1902137	HF6162	-	-
HD 490 S 38T	2008 →	Cursor 13	2996126	AF26241	-	-	2992662	FS19821	500315480	FF5471	-	-	2995964	AF26146	1902137	HF6162	-	-
HD 490 S 42T	2008 →	Cursor 13	2996126	AF26241	-	-	2992662	FS19821	500315480	FF5471	-	-	2995964	AF26146	1902137	HF6162	-	-
HD 570 S38T	2005 →	Cursor 13 F3BE0681G	1907695 2996126	AF25235 AF26241	-	-	2992662	FS19821	500315480	FF5471	-	-	2995964	AF26146	1902137	HF6162	-	-
HD 570 S42T	2005 →	Cursor 13 F3BE0681V	1907695 2996126	AF25235 AF26241	-	-	2992662	FS19821	500315480	FF5471	-	-	2995964	AF26146	1902137	HF6162	-	-
HD 740 S42T	2005 →	Cursor 13 F3BE0681V	1907695 2996126	AF25235 AF26241	-	-	2992662	FS19821	500315480	FF5471	-	-	2995964	AF26146	1902137	HF6162	-	-

AGRALE

FORD

FOTON

INTERNATIONAL

IVECO

MAN

MERCEDES-BENZ

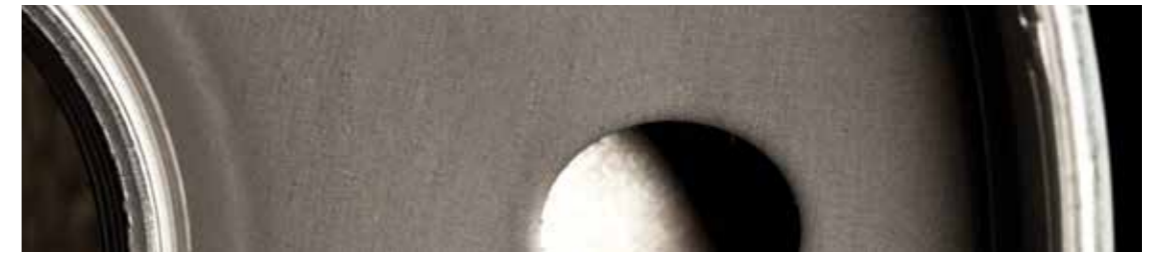
SCANIA

SHACMAN

VOLKSWAGEN

VOLVO

Produtos Fleetguard
MAN



Modelo	Ano	Motor	Filtro de Ar				Filtro Separador de Combustível		Filtro de Combustível		Filtro Lubrificante	
			Elemento Primário		Elemento Secundário		Número Man	Número Fleetguard	Número Man	Número Fleetguard	Número Man	Número Fleetguard
			Número Man	Número Fleetguard	Número Man	Número Fleetguard						
29440	2012 →	MAND2676 LF28 10L	81.08405-0021 2V5.121.027	AF25894	81.08405-0017	AF25896	2R0127177J	-	2V5.201.512	FF5629	51.05504-0108 2V5115466	LF17056
33440	2012 →	MAND2676 LF28 10L	81.08405-0021 2V5.121.027	AF25894	81.08405-0017	AF25896	2R0127177J	-	2V5.201.512	FF5629	51.05504-0108 2V5115466	LF17056

AGRALE

FORD

FOTON

INTERNATIONAL

IVECO

MAN

MERCEDES-BENZ

SCANIA

SHACMAN

VOLKSWAGEN

VOLVO

Produtos Fleetguard MERCEDES-BENZ



Modelo	Ano	Motor	Filtro de Ar				Filtro Separador de Combustível		Filtro de Combustível		Filtro Lubrificante		Filtro da Direção Hidráulica		Filtro Secador de Freio	
			Elemento Primário		Elemento Secundário		Número Mercedes-Benz	Número Fleetguard	Número Mercedes-Benz	Número Fleetguard	Número Mercedes-Benz	Número Fleetguard	Número Mercedes-Benz	Número Fleetguard	Número Mercedes-Benz	Número Fleetguard
			Número Mercedes-Benz	Número Fleetguard	Número Mercedes-Benz	Número Fleetguard										
608 D	1993 →	OM 314	0010944504	AF4067	3080947004	AF4521	3820927005	FS19996	0000921505	FF4141	-	-	4660204	HF6162	-	-
608 L - D / E / O	1973-83	OM 314	0010944504	AF4067	3080947004	AF4521	3820927005	FS19996	0000921505	FF4141	3445867890	LF3358	4660204	HF6162	-	-
610 L	1985 →	OM 314 Álcool	0010944504	AF4067	3080947004	AF4521	-	-	-	-	-	-	4660204	HF6162	-	-
708 L - D	1983 →	OM 314	3740947004	AF25075	20943204	AF1840	3820927005	FS19996	-	-	11844125	LF3605	4660204	HF6162	-	-
708 L - E	1973-82	OM 314	3740947004	AF25075	20943204	AF1840	-	-	-	-	3445867890	LF3358	4660204	HF6162	-	-
709 L	1989 →	OM 364	0010948204	AF4135	20943304	AF4522	3820927005	FS19996	-	-	11844125	LF3605	4660204	HF6162	-	-
710 (4x2)	1996 →	OM 364A	3740947004	AF25075	20943204	AF1840	3820927005	FS19996	-	-	11844125	LF3605	4660204	HF6162	-	-
710 Plus	1995 →	OM 364LA	3740947004	AF25075	20943204	AF1840	3820927005	FS19996	-	-	11844125	LF3605	4660204	HF6162	-	-
712 C	1998 →	OM 904LA	3740907104	AF26358	3740947204	AF26290	3820927005	FS19996	0000901551	FF5380	1801609	LF3827	4660204	HF6162	2TB607439	AF27817
712 E	1995 →	OM 364 LA	3740907104 3740947004	AF4058 AF25075	20946104 20943204	AF1842 AF1840	0070131002	FS20041	-	-	11844125	LF3605	4660204	HF6162	-	-
812 L	1990 →	OM 364 A/LA	3740947004	AF25075	20943204	AF1840	0070131002	FS20041	-	-	11844125	LF3605	4660204	HF6162	2TB607439	AF27817
813 D	1990 →	OM 364 A/LA	3740947004	AF25075	20943204	AF1840	3820927005	FS19996	-	-	11844125	LF3605	4660204	HF6162	-	-
912 C	2000 →	OM 904 LA	3740907104	AF26358	3740947204	AF26290	3820927005	FS19996	0000901551	FF5380	1801609	LF3827	4660204	HF6162	2TB607439	AF27817
912 L	1990 →	OM 364 A/LA	3740907104 3740947004	AF4058 AF25075	20946104 20943204	AF1842 AF1840	3820927005	FS19996	-	-	11844125	LF3605	4660204	HF6162	-	-
914 C	1998-04	OM 904 LA	3740907104	AF26358	3740947204	AF26290	0070131002	FS20041	0000901551	FF5380	1801609	LF3827	4660204	HF6162	2TB607439	AF27817
914 L	1990 →	OM 356 A	3740947004	AF25075	20943204	AF1840	3820927005	FS19996	-	-	11844125	LF3605	4660204	HF6162	2TB607439	AF27817
915 E	1998 →	OM 904 LA	3740907104	AF26358	3740947204	AF26290	0070131002	FS20041	0000901551	FF5380	1801609	LF3827	4660204	HF6162	2TB607439	AF27817
1014 LN	1989 →	OM 364 LA	3740947004	AF25075	20943204	AF1840	3820927005	FS19996	-	-	11844125	LF3605	4660204	HF6162	-	-
1017 O	1990 →	OM 366 LA	0010945204	AF25064	20943204	AF1840	-	-	-	-	-	-	4660204	HF6162	-	-
1111 L/LP/LPO	1960-70	OM 321-324-326	-	-	-	-	-	-	0000900551	FF4033	-	-	4660204	HF6162	-	-
1113 L	→ 1978	OM 352	0010945204	AF25064	20943204	AF1840	0000921505	FF4141	0000322405	FF146	441840025	LF3357	4660204	HF6162	-	-
1113 L/LK	1978 →	OM 352	0010945204	AF25064	20943204	AF1840	-	-	-	-	3441800109	LF3322	4660204	HF6162	-	-
1114 L/LK	1978 →	OM 352	0010945204	AF25064	20943204	AF1840	-	-	-	-	3441800109	LF3322	4660204	HF6162	-	-
1116	1979 →	OM 352A	0010945204	AF25064	20943204	AF1840	-	-	-	-	441840025	LF3357	4660204	HF6162	-	-
1118 L/LK	1978 →	OM 352	0010945204	AF25064	20943204	AF1840	-	-	-	-	441840025	LF3357	4660204	HF6162	-	-
1214 C	1996 →	OM 364 A/LA	3740947004	AF25075	20943204	AF1840	3820927005	FS19996	-	-	11844125	LF3605	4660204	HF6162	-	-
1214 L/LK/K/R/LA	1989 →	OM 366 A/LA	0010945204 3760947904	AF25064 AF25997	20943204 3760948004	AF1840 AF26211	3820927005	FS19996	0000921505	FF4141	11844225	LF3573	4660204	HF6162	-	-
1214 L/LK/K/R/LA	1989 →	OM 366	0010945204	AF25064	20943204	AF1840	3820927005	FS19996	0000921505	FF4141	3441800109	LF3322	4660204	HF6162	-	-
1215 C	1998 →	OM 904 LA	3740907104	AF26358	3740947204	AF26290	3820927005	FS19996	0000901551	FF5380	1801609	LF3827	4660204	HF6162	-	-
1215 L/LA	→ 1997	OM 904 LA	0010945204	AF25064	20943204	AF1840	3820927005	FS19996	0000921505	FF4141	11844225	LF3573	4660204	HF6162	2TB607439	AF27817
1218 (Eletrônico)	2001 →	OM 904 LA	3740907104	AF26358	3740947204	AF26290	3820927005 9584770115	FS19996 FS1106	0000901551	FF5380	1801609	LF3827	4660204	HF6162	-	-
1218 L/LA/LAK/LK-R	1989 →	OM 366 A/LA	0010945204 3760947904	AF25064 AF25997	20943204 3760948004	AF1840 AF26211	3820927005	FS19996	0000921505	FF4141	11844225	LF3573	4660204	HF6162	2TB607439	AF27817
1313 L/LK	→ 1979	OM 352	0010945204	AF25064	20943204	AF1840	-	-	-	-	441840025 3441800109	LF3357 LF3322	4660204	HF6162	-	-
1314 L/LK/LAK	→ 1978	OM 352	0010945204	AF25064	20943204	AF1840	-	-	-	-	441840025 3441800109	LF3357 LF3322	4660204	HF6162	-	-
1316 L/LK	1978-79	OM 352	0010945204	AF25064	20943204	AF1840	-	-	-	-	441840025 3441800109	LF3357 LF3322	4660204	HF6162	-	-

AGRALE

FORD

FOTON

INTERNATIONAL

IVECO

MAN

MERCEDES-BENZ

SCANIA

SHACMAN

VOLKSWAGEN

VOLVO

Produtos Fleetguard MERCEDES-BENZ



Modelo	Ano	Motor	Filtro de Ar				Filtro Separador de Combustível		Filtro de Combustível		Filtro Lubrificante		Filtro da Direção Hidráulica		Filtro Secador de Freio			
			Elemento Primário		Elemento Secundário		Número Mercedes-Benz	Número Fleetguard	Número Mercedes-Benz	Número Fleetguard	Número Mercedes-Benz	Número Fleetguard	Número Mercedes-Benz	Número Fleetguard	Número Mercedes-Benz	Número Fleetguard	Número Mercedes-Benz	Número Fleetguard
			Número Mercedes-Benz	Número Fleetguard	Número Mercedes-Benz	Número Fleetguard												
1317 L/LK/LAK	1975 →	OM 352A	0010945204	AF25064	20943204	AF1840	-	-	-	-	441840025 3441800109	LF3357 LF3322	4660204	HF6162	-	-		
1318	2003 →	OM 904 LA	3760947904	AF25997	6345280206 3760948004	AF26211	0070131002	FS20041	0000901551	FF5380	441840025	LF3357	4660204	HF6162	2TB607439	AF27817		
1318 L/LK	1975 →	OM 352 A	0010945204	AF25064	20943204	AF1840	-	-	-	-	1801609	LF3827	4660204	HF6162	2TB607439	AF27817		
1319 L	1984 →	OM 366 A/LA	0010945204	AF25064	20943204	AF1840	3820927005	FS19996	0000921505	FF4141	11844225	LF3573	4660204	HF6162	-	-		
1414 L	1989 →	OM 366	0010945204	AF25064	20943204	AF1840	3820927005	FS19996	0000921505	FF4141	3441800109	LF3322	4660204	HF6162	-	-		
1414 L/LK	1989 →	OM 366 A/LA	0010945204	AF25064	20943204	AF1840	3820927005	FS19996	0000921505	FF4141	-	-	4660204	HF6162	-	-		
1418 L/EL	2002 →	OM 904 LA	3760947904	AF25997	6345280206 3760948004	AF26211	3820927005 0070131002	FS19996 FS20041	0000901551	FF5380	1801609	LF3827	4660204	HF6162	-	-		
1418 L/LK/LA/LAK-R	1989 →	OM 366 A/LA	0010945204 3760947904	AF25064 AF25997	20943204 3760948004	AF1840 AF26211	3820927005	FS19996 -	0000921505	FF4141	11844225	LF3573	4660204	HF6162	-	-		
1420	2002 →	OM 366 LA	3760947904	AF25997	-	-	3820927005	FS19996	-	-	11844225	LF3573	-	-	-	-		
1513 L/LK	1979 →	OM 352	0010945204	AF25064	20943204	AF1840	-	-	-	-	3441800109	LF3322	-	-	-	-		
1514 L/LK	1979 →	OM 352	0010945204	AF25064	20943204	AF1840	-	-	-	-	3441800109	LF3322	-	-	-	-		
1516 L/LK	1979 →	OM 352	0010945204	AF25064	20943204	AF1840	-	-	-	-	3441800109	LF3322	-	-	-	-		
1517 L/LK	1986 →	OM 355/5	0010945204	AF25064	20943204	AF1840	-	-	0000900551	FF4033	3455867290 0001801209	-	-	-	-	-		
1518 L/LK	1987 →	OM 352 A	0010945204	AF25064	20943204	AF1840	-	-	-	-	3441800109	LF3322	-	-	-	-		
1519 L (Canavieiro)	1980 →	OM 355/5	0010944704	AF25065	-	-	-	-	0000900551	FF4033	-	-	-	-	-	-		
1519 L/LS/LK	1980 →	OM 355/5	0010945204	AF25064	20943204	AF1840	-	-	0000900551	FF4033	3455867290 0001801209	-	-	-	-	-		
1520 L (Canavieiro)	1980 →	OM 355/5	0010944704	AF25065	-	-	-	-	0000900551	FF4033	3455867290 0001801209	-	-	-	-	-		
1520 LP	1987 →	OM 352	0010945204	AF25064	20943204	AF1840	-	-	-	-	3441800109	LF3322	-	-	-	-		
1524 LS	1985-87	OM 355/6	0010944704	AF25065	-	-	3820927005	FS19996	0000900551	FF4033	3455867290 0001801209	-	-	-	2TB607439	AF27817		
1524 LS	1985-87	OM 355/6	0010944704	AF25065	-	-	3820927005	FS19996	0000900551	FF4033	3455867290 0001801209	-	-	-	2TB607439	AF27817		
1614 L/LK	1989 →	OM 366	0010945204	AF25064	20943204	AF1840	0070131002	FS20041	-	-	-	-	-	-	-	-		
1618 L/LK	1989 →	OM 366 A/LA	0010945204	AF25064	20943204	AF1840	3820927005	FS19996	-	-	-	-	-	-	-	-		
1618 M	1998 →	OM 904 LA	3740947004	AF25075	3740947204	AF26290	3820927005 0070131002	FS19996 FS20041	0000901551	FF5380	1801609	LF3827	-	-	-	-		
1620 L	1998 →	OM 906 LA	3760947904 3760948204	AF25997 AF323	- -	- -	3820927005 0070131002	FS19996 FS20041	0000901551	FF5380	1801709	LF3914	4660204	HF6162	-	-		
1620 L/LK	1996 →	OM 366 LA	3760947904 3760948204	AF25997 AF323	6345280206 3760948004 3500947104	AF26211 -	3820927005 0070131002	FS19996 FS20041	0000901551	FF5380	1801709	LF3914	4660204	HF6162	-	-		
1621 LK	1989 →	OM 366 A/LA	3760947904 0010947904	AF25997 AF4060	-	-	3820927005	FS19996	0000921505	FF4141	11844225	LF3573 -	-	-	-	-		
1622 L	2001 →	OM 924 LA	3760948204	AF323	3500947104	-	0070131002	FS20041	0000901551	FF5380	1801609	LF3827	4660204	HF6162	-	-		
1622 L/LS	1989 →	OM 366 A/LA	0010947904	AF4060	3500947104	-	3820927005	FS19996	0000921505	FF4141	11844225	LF3573 -	-	-	-	-		
1625 L/LS	1990 →	OM 449 A/LA	0010947904	AF4060	3500947104	-	3820927005	FS19996	-	-	3621800110	LF3320	-	-	-	-		
1630 LS	1990 →	OM 449 A/LA	0010947904	AF4060	3500947104	-	3820927005	FS19996	-	-	3621800110	LF3320	-	-	-	-		
1632 LS	1999 →	OM 449 A/LA	3880947004 8690940020	AF1802	3500947104	-	-	-	-	-	3621800110	LF3320	-	-	-	-		

AGRALE

FORD

FOTON

INTERNATIONAL

IVECO

MAN

MERCEDES-BENZ

SCANIA

SHACMAN

VOLKSWAGEN

VOLVO

Produtos Fleetguard MERCEDES-BENZ



Modelo	Ano	Motor	Filtro de Ar				Filtro Separador de Combustível		Filtro de Combustível		Filtro Lubrificante		Filtro da Direção Hidráulica		Filtro Secador de Freio		
			Elemento Primário		Elemento Secundário		Número Mercedes-Benz	Número Fleetguard	Número Mercedes-Benz	Número Fleetguard	Número Mercedes-Benz	Número Fleetguard	Número Mercedes-Benz	Número Fleetguard	Número Mercedes-Benz	Número Fleetguard	
			Número Mercedes-Benz	Número Fleetguard	Número Mercedes-Benz	Número Fleetguard											
1633 L	1990 →	OM 449 A/LA	0010947904	AF4060	3500947104	-	-	3820927005	FS19996	-	-	3621800110	LF3320	-	-	-	-
1634 LS	2006 →	OM 457 LA	4760940004	AF27857	-	-	0070131002 9584770115	FS20041 FS1106	4570900051	FF5405	1843825	LF3327	4660204	HF6162	2TB607439	AF27817	
1634 LS	2000 →	OM 447 LA	4760940004	AF27857	-	-	-	-	-	-	1843825	LF3327	-	-	2TB607439	AF27817	
1714 L	1996 →	OM 366 LA	3760947904	AF25997	6345280206 3760948004	AF26211	-	-	-	-	-	-	-	-	-	-	
1714 L/LK	1989-95	OM 366	0010945204	AF25064	20943204	AF1840	3820927005 3900920001	FS19996 -	-	-	3441800109	LF3322	-	-	-	-	
1718 K-A	1991 →	OM 366 A/LA	0010945204 3760947904	AF25064 AF25997	20943204 3760948004	AF1840 AF26211	3820927005	FS19996	0000921505	FF4141	11844225	LF3573 -	-	-	-	-	
1718 M	1998 →	OM 904 LA	3740907104	AF26358	3740947204	AF26290	0070131002	FS20041	0000901551	FF5380	1801609	LF3827	-	-	-	-	
1720 K-A	1996 →	OM 366 A/LA	3760947904	AF25997	6345280206 3760948004	AF26211	-	-	-	-	-	-	-	-	-	-	
1721 LK/LS-S	1990 →	OM 366 A/LA	0010945204 3760947904 0010947904	AF25064 AF25997 AF4060	20943204 3760948004 3500947104	AF1840 AF26211 -	3820927005	FS19996	0000921505	FF4141	11844225	LF3573 -	-	-	-	-	
1723 L	1998 →	OM 906 LA	3760947904	AF25997	6345280206 3760948004	AF26211	0070131002	FS20041	0000901551	FF5380	1801709	LF3914	-	-	-	-	
1723 S	1996 →	OM 366 A/LA	3760947904	AF25997	6345280206 3760948004	AF26211	-	-	-	-	-	-	-	-	2TB607439	AF27817	
1728	1998 →	OM 906 LA	3760947904	AF25997	6345280206 3760948004	AF26211	0070131002	FS20041	0000901551	FF5380	1801709	LF3914	-	-	-	-	
1924 LS	1979 →	OM 355/6	0010945204 0010947904	AF25064 AF4060	20943204 3500947104	AF1840 -	-	-	0000900551	-	3455867290 0001801209	-	-	-	-	-	
1929 L	1990 →	OM 447 A	3880947004 8690940020	AF1802	3500947104	-	-	-	-	-	1843825	LF3327	-	-	-	-	
1929 LS	1983 →	OM 355/6 A/LA	0010947904	AF4060	3500947104	-	-	-	0000900551	-	3455867290 0001801209	-	-	-	-	-	
1932 LS	1983 →	OM 355/6 A/LA	0010947904	AF4060	3500947104	-	3820927005	FS19996	0000900551	-	3455867290 0001801209	-	4660204	HF6162	-	-	
1933 LS	1987 →	OM 355/6 A/LA	0010947904	AF4060	3500947104	-	3820927005	FS19996	0000900551	-	3455867290 0001801209	-	-	-	-	-	
1934 LS	1987 →	OM 355/6 A/LA	0010947904	AF4060	3500947104	-	3820927005	FS19996	0000900551	-	3455867290 0001801209	-	-	-	-	-	
1935 LS	1990 →	OM 447 A/LA	3880947004 8690940020	AF1802	3500947104	-	3820927005	FS19996	-	-	1843825	LF3327	-	-	-	-	
1938 LS	1998 →	OM 457 LA	3880947004 8690940020	AF1802	3500947104	-	-	-	4570900051	FF5405	1843825	LF3327	4660204	HF6162	-	-	
1938 LS-S	1996 →	OM 447 LA	3880947004 8690940020	AF1802	3500947104	-	-	-	0000900551	-	1843825	LF3327	4660204	HF6162	-	-	
1938 S	1999 →	OM 457 LA	4760940004	AF27857	4760940104	AF26678	-	-	4570900051	FF5405	1843825	LF3327	-	-	-	-	
1941 LS	1990 →	OM 447 LA	3880947004 8690940020	AF1802	3500947104	-	3820927005	FS19996	0000900551	-	1843825	LF3327	4660204	HF6162	-	-	
1944 S	2002 →	OM 457 LA	4760940004	AF27857	4760940104	AF26678	0070131002	-	4570900051	FF5405	1843825	LF3327	4660204	HF6162	-	-	
2013 L	1979 →	OM 352	10945204	AF25064	20943204	AF1840	-	-	-	-	3441800109	LF3322	-	-	-	-	
2014	1975 →	OM 352 A	10945204	AF25064	20943204	AF1840	-	-	-	-	3441800109	LF3322	-	-	-	-	
2213 L/LK/LB	1975 →	OM 352	10945204	AF25064	20943204	AF1840	-	-	-	-	3441800109	LF3322	-	-	-	-	
2214 L/LK	1975 →	OM 352	10945204	AF25064	20943204	AF1840	-	-	-	-	3441800109	LF3322	-	-	-	-	
2215 LK	1984 →	OM 366	10945204	AF25064	20943204	AF1840	3820927005	FS19996	-	-	3441800109	LF3322	-	-	-	-	
2216 L/LK/LB	1980 →	OM 366	10945204	AF25064	20943204	AF1840	3900920001	FS1214	-	-	3441800109	LF3322	-	-	-	-	
2217 L/LK/LB	1987 →	OM 366	10945204	AF25064	20943204	AF1840	3820927005	FS19996	-	-	3441800109	LF3322	-	-	-	-	

AGRALE

FORD

FOTON

INTERNATIONAL

IVECO

MAN

MERCEDES-BENZ

SCANIA

SHACMAN

VOLKSWAGEN

VOLVO

Produtos Fleetguard MERCEDES-BENZ



Modelo	Ano	Motor	Filtro de Ar				Filtro Separador de Combustível		Filtro de Combustível		Filtro Lubrificante		Filtro da Direção Hidráulica		Filtro Secador de Freio	
			Elemento Primário		Elemento Secundário		Número Mercedes-Benz	Número Fleetguard	Número Mercedes-Benz	Número Fleetguard	Número Mercedes-Benz	Número Fleetguard	Número Mercedes-Benz	Número Fleetguard	Número Mercedes-Benz	Número Fleetguard
			Número Mercedes-Benz	Número Fleetguard	Número Mercedes-Benz	Número Fleetguard										
2219 L/LK/LB	1980 →	OM 355/5	10945204 0010944704	AF25064 AF25065	20943204 0030944504	AF1840 AF1841	-	-	0000900551	-	3455867290 0001801209	LF3350	-	-	-	-
2220 L/LK/LB	1979 →	OM 355/5	10945204 0010944704	AF25064 AF25065	20943204 0030944504	AF1840 AF1841	-	-	0000900551	-	3455867290 0001801209	LF3350	-	-	-	-
2225 L	1990 →	OM 449 A	0010947904	AF4060	3500947104	-	3820927005	FS19996	-	-	3621800110	LF3320	-	-	-	-
2225 L/LS	1989 →	OM 355/5 A	0010944704	AF25065	0030944504	AF1841	3820927005	FS19996	0000900551	-	3455867290 0001801209	LF3350	-	-	-	-
2236 L	1990 →	OM 447 A	0010944704	AF25065	0030944504	AF1841	3820927005	FS19996	0000900551	-	1843825	LF3327	-	-	-	-
2318 L/LK/LB	1990 →	OM 366 A/LA	10945204 3760947904	AF25064 AF25997	20943204 3760948004	AF1840 AF26211	3820927005	FS19996	0000921505	FF4141	11844225	LF3573 -	-	-	2TB607439	AF27817
2318 L/LK/LB	1990 →	OM 366	10945204	AF25064	20943204	AF1840	3820927005	FS19996	0000921505	FF4141	3441800109	LF3322	4660204	HF6162	-	-
2325 L/LA/LAK	1990 →	OM 449 A	0010947904	AF4060	3500947104	-	3820927005	FS19996	-	-	3621800110	LF3320	-	-	-	-
2418 L	1992 →	OM 366 A/LA	10945204 3760947904	AF25064 AF25997	20943204 3760948004	AF1840 AF26211	3820927005	FS19996	0000921505	FF4141	11844225	LF3573 -	4660204	HF6162	-	-
2423 B-K	2000 →	OM 906 LA	3760947904	AF25997	6345280206 3760948004	AF26211	0070131002	FS20041	0000901551	FF5380	1801709	LF3914	-	-	2TB607439	AF27817
2428	2001 →	OM 906 LA	3760947904	AF25997	-	-	0070131002	FS20041	0000901551	FF5380	1801709	LF3914	-	-	2TB607439	AF27817
2635 L/LS	1994 →	OM 447 LA	3880947004 8690940020	AF1802	3500947104	-	3820927005	FS19996	-	-	1843825	LF3327	-	-	-	-
2638 L/LS/LK	→ 1997	OM 447 LA	3880947004 8690940020	AF1802	3500947104	-	3820927005	FS19996	-	-	1843825	LF3327	-	-	-	-
2638 L/LS/LK	1999 →	OM 457 LA	3880947004 8690940020	AF1802 AF27857	3500947104 4760940104	- AF26678	-	-	4570900051	FF5405	1843825	LF3327	-	-	-	-
Accelo 1016 C	2011 →	OM 924 LA	3740907104	-	-	-	9584770115	FS1106	0000901551	FF5380	1801609	LF3827	4660204	HF6162	-	-
Accelo 715 C	2002-09	OM 612 LA	3740907104	-	-	-	9584770115	FS1106	6110920601	FF5619	-	-	4660204	HF6162	2TB607439	AF27817
Accelo 815	2011 →	OM 924 LA	3740907104	-	-	-	9584770115	FS1106	0000901551	FF5380	1801609	LF3827	-	-	-	-
Accelo 915 C	2002-12	OM 904 LA	3740907104	-	3740947204	AF26290	9584770115	FS1106	0000901551	FF5380	1801609	LF3827	4660204	HF6162	2TB607439	AF27817
Actros 2646 LS	2012 →	OM 501 LA	-	-	-	-	-	-	-	-	-	-	-	-	2TB607439	AF27817
Atego 1315	2005 →	OM 904 LA	0030949604	AF25653	-	-	9584770115	FS1106	0000901551	FF5380	1801609	LF3827	4660204	HF6162	-	-
Atego 1418	2005-12	OM 904 LA	0030949604	AF25653	-	-	9584770115	FS1106	0000901551	FF5380	1801609	LF3827	4660204	HF6162	-	-
Atego 1518	2005-12	OM 904 LA	0030949604	AF25653	-	-	9584770115	FS1106	0000901551	FF5380	1801609	LF3827	4660204	HF6162	-	-
Atego 1718	2005-12	OM 904 LA	0030949604	AF25653	-	-	9584770115	FS1106	0000901551	FF5380	1801609	LF3827	4660204	HF6162	-	-
Atego 1719	2013 →	OM 904 LA	0030949604	AF25653	-	-	9584770115	FS1106	0000901551	FF5380	1801609	LF3827	4660204	HF6162	-	-
Atego 1725	2005-11	OM 906 LA	0030949604	AF25653	-	-	9584770115	FS1106	0000901551	FF5380	-	-	4660204	HF6162	-	-
Atego 1728	2007-10	OM 926 LA	0030949604	AF25653	-	-	9584770115	FS1106	0000901551	FF5380	-	-	4660204	HF6162	-	-
Atego 2425	2005-12	OM 906 LA	0030949604	AF25653	-	-	9584770115	FS1106	0000901551	FF5380	-	-	4660204	HF6162	-	-
Atego 2428	2007-11	OM 926 LA	0030949604	AF25653	-	-	9584770115	FS1106	0000901551	FF5380	-	-	4660204	HF6162	-	-

AGRALE

FORD

FOTON

INTERNATIONAL

IVECO

MAN

MERCEDES-BENZ

SCANIA

SHACMAN

VOLKSWAGEN

VOLVO

Produtos Fleetguard MERCEDES-BENZ



Modelo	Ano	Motor	Filtro de Ar				Filtro Separador de Combustível		Filtro de Combustível		Filtro Lubrificante		Filtro de Ar-Condicionado		Filtro da Direção Hidráulica		Filtro Secador de Freio	
			Elemento Primário		Elemento Secundário		Número Mercedes-Benz	Número Fleetguard	Número Mercedes-Benz	Número Fleetguard	Número Mercedes-Benz	Número Fleetguard	Número Mercedes-Benz	Número Fleetguard	Número Mercedes-Benz	Número Fleetguard	Número Mercedes-Benz	Número Fleetguard
			Número Mercedes-Benz	Número Fleetguard	Número Mercedes-Benz	Número Fleetguard												
Axor 1933 (BlueTec 5)	2012 →	OM 926 LA	-	-	-	-	-	-	-	-	-	-	-	-	-	-	2TB607439	AF27817
Axor 1933 S	2005-11	OM 926 LA	0030949604	AF25653	-	-	9584770115	FS1106	0000901551	FF5380	-	-	9408350047	AF26174	4660204	HF6162	2TB607439	AF27817
Axor 2035 S	2005-11	OM 457 LA	4760940004	AF26242	4760940104	AF26678	0070131002	FS20041	4570900051	FF5405	1802109	LF16046	9408350047	AF26174	4660204	HF6162	2TB607439	AF27817
Axor 2040 S	2005-11	OM 457 LA	4760940004	AF26242	4760940104	AF26678	0070131002	FS20041	4570900051	FF5405	1802109	LF16046	9408350047	AF26174	4660204	HF6162	2TB607439	AF27817
Axor 2041 (BlueTec 5)	2012 →	OM 457 LA	-	-	-	-	-	-	-	-	-	-	9408350047	AF26174	-	-	-	-
Axor 2044 S	2006 →	OM 457 LA	4760940004	AF26242	4760940104	AF26678	0070131002	FS20041	4570900051	FF5405	1802109	LF16046	9408350047	AF26174	4660204	HF6162	-	-
Axor 2533 (6x2)	2005-11	OM 926 LA	0030949604	AF25653	-	-	0070131002	FS20041	0000901551	FF5380	-	-	9408350047	AF26174	4660204	HF6162	-	-
Axor 2533 (BlueTec 5)	2012 →	OM 926 LA	3760948204	AF323	-	-	0070131002	FS20041	0000901551	FF5380	-	-	9408350047	AF26174	4660204	HF6162	-	-
Axor 2544 S (6x2)	2006 →	OM 457 LA	4760940004	AF26242	4760940104	AF26678	0070131002	FS20041	4570900051	FF5405	1802109	LF16046	9408350047	AF26174	4660204	HF6162	2TB607439	AF27817
Axor 2640 S (6x4)	2006-11	OM 457 LA	4760940004	AF26242	4760940104	AF26678	0070131002	FS20041	4570900051	FF5405	1802109	LF16046	9408350047	AF26174	4660204	HF6162	-	-
Axor 2644 (BlueTec 5)	2012 →	OM 457 LA	-	-	-	-	-	-	-	-	-	-	9408350047	AF26174	-	-	-	-
Axor 2644 S (6x4)	2005-11	OM 457 LA	4760940004	AF26242	4760940104	AF26678	0070131002	FS20041	4570900051	FF5405	1802109	LF16046	9408350047	AF26174	4660204	HF6162	2TB607439	AF27817
Axor 2826 (6x4)	2006-11	OM 926 LA	0030949604	AF25653	-	-	0070131002	FS20041	0000901551	FF5380	-	-	9408350047	AF26174	4660204	HF6162	-	-
Axor 2831 (6x4)	2006 →	OM 926 LA	0030949604	AF25653	-	-	0070131002	FS20041	0000901551	FF5380	-	-	9408350047	AF26174	4660204	HF6162	-	-
Axor 3340 / 3340 S / 3340 K (6x4)	2005-11	OM 457 LA	4760940004	AF26242	4760940104	AF26678	0070131002	FS20041	4570900051	FF5405	1802109	LF16046	9408350047	AF26174	4660204	HF6162	2TB607439	AF27817
Axor 3344 / 3344 S / 3344 K (6x4)	2006 →	OM 457 LA	4760940004	AF26242	4760940104	AF26678	0070131002	FS20041	4570900051	FF5405	1802109	LF16046	9408350047	AF26174	4660204	HF6162	2TB607439	AF27817
Axor 4140 K (6x4)	2006-10	OM 457 LA	4760940004	AF26242	4760940104	AF26678	0070131002	FS20041	4570900051	FF5405	1802109	LF16046	9408350047	AF26174	4660204	HF6162	2TB607439	AF27817
Axor 4144 K (6x4)	2006 →	OM 457 LA	4760940004	AF26242	4760940104	AF26678	0070131002	FS20041	4570900051	FF5405	1802109	LF16046	9408350047	AF26174	4660204	HF6162	2TB607439	AF27817

AGRALE

FORD

FOTON

INTERNATIONAL

IVECO

MAN

MERCEDES-BENZ

SCANIA

SHACMAN

VOLKSWAGEN

VOLVO

Produtos Fleetguard SCANIA



Modelo	Ano	Motor	Filtro de Ar				Filtro Separador de Combustível		Filtro de Combustível		Filtro Lubrificante		Filtro de Ar-Condicionado		Filtro Direção Hidráulica	
			Elemento Primário		Elemento Secundário		Número Scania	Número Fleetguard	Número Scania	Número Fleetguard	Número Scania	Número Fleetguard	Número Scania	Número Fleetguard	Número Scania	Número Fleetguard
			Número Scania	Número Fleetguard	Número Scania	Número Fleetguard										
112 R/T/K/S (HS/HW/EW)	1981 →	DSC11	261185	AF4149	534157 534158	-	1671501	-	524762	FF5074	173171	LF3376	1770813	AF27692	153468	HF6162
112 R/T/K/S (HS/HW/EW)	1981 →	DSC14	261185	AF4149	534157 534158	-	1671501	-	524762	FF5074	173171	LF3376	1770813	AF27692	153468	HF6162
113 R/T (H)	1991 →	DSC11, DSC14	365729	AF4631	534157 534158	-	1671501	-	524762	FF5074	173171	LF3376	1770813	AF27692	153468	HF6162
113 R/T (HK)	1981 →	DS11, DSC11, DSC14	365729	AF4631	534157 534158	-	1671501	-	524762	FF5074	173171	LF3376	1770813	AF27692	153468	HF6162
114 P/R/T	1997 →	DC11, DSC11-07	1423414	-	-	-	1518512	FS19551	1411894	FF5424	173171 1117285	LF3376 LF3730	1770813	AF27692	153468	HF6162
124 P/R/T	1998 →	DSC 12-01,02,09	1423414	-	-	-	1518512	FS19551	1411894	FF5424	1117285	LF3730	1770813	AF27692	153468	HF6162
124 P/R/T	1999 →	DSC12-02	1423414	-	-	-	1518512	FS19551	1411894	FF5424	1117285	LF3730	1770813	AF27692	153468	HF6162
142 R/T (E/H/EW/HW/HS)	1981 →	DS14, DSC14	261185	AF4149	534157 534158	-	1671501	-	524762	FF5074	173171	LF3376	1770813	AF27692	153468	HF6162
142 R/T (E/H/EW/HW/HS)	1981 →	DS11	261185	AF4149	534157 534158	-	1671501	-	524762	FF5074	173171	LF3376	1770813	AF27692	153468	HF6162
142 R/T (HW/EW)	1981 →	DSC11	261185	AF4149	534157 534158	-	1671501	-	524762	FF5074	173171	LF3376	1770813	AF27692	153468	HF6162
142 R/T (HW/EW)	1981 →	DSC14	261185	AF4149	534157 534158	-	1671501	-	524762	FF5074	173171	LF3376	1770813	AF27692	153468	HF6162
164 R	2002 →	DC16-02	1423414	-	-	-	1518512	FS19551	1873018	FF5683	-	-	1770813	AF25829	153468	HF6162
94 P/R/T (CB/DB (220cv/260cv))	1997 →	DSC9-12	1423414	-	-	-	1518512	FS19551	1411894	FF5424	1117285	LF3730	1770813	AF25829	153468	HF6162
G360	2010 →	DC13 114 360 cv	-	-	-	-	-	-	-	-	-	-	1770813	AF27692	153468	HF6162
G380	2006 →	D12-17	1485592	AF27857	-	-	1518512	FS19551	1763776	FF5424	1117285	LF3730	1770813	AF27692	153468	HF6162
G380	2006 →	DC12-17	-	-	-	-	1518512	FS19551	-	-	1117285	LF3730	1770813	AF27692	153468	HF6162
G400	2010 →	DC13 113 420 cv	-	-	-	-	-	-	-	-	1742032 1742037	LF17486	1770813	AF27692	-	-
G420	2006 →	D12-06	1485592 1423414	AF27857 -	-	-	1518512	FS19551	1763776	FF5424	1117285	LF3730	1770813	AF27692	153468	HF6162
G420	2008 →	DC12-06	1485592 1423414	AF27857 -	-	-	1518512	FS19551	1873018	FF5683	1117285	LF3730	1770813	AF27692	153468	HF6162
G440	2006 →	DT12-18	1485592 1423414	AF27857 -	-	-	1518512	FS19551	1873018	FF5683	1117285	LF3730	1770813	AF27692	153468	HF6162
G440	2010 →	DC13 112 440 cv	1485592 1423414	AF27857 -	- 1484437	- AF26678	-	-	-	-	1742032 1742037	LF17486	1770813	AF27692	153468	HF6162
G470	2006 →	DT12-06	1485592 1423414	AF27857 -	-	-	1518512	FS19551	1873018	FF5683	1117285	LF3730	1770813	AF27692	153468	HF6162
G480	2010 →	DC13 111 480 cv	-	-	-	-	-	-	-	-	1742032 1742037	LF17486	1770813	AF27692	153468	HF6162
L110	1971-76	D11	69489	AF970	-	-	524762	-	524762	FF5074	-	-	1770813	AF27692	153468	HF6162
L111	1977 →	DS11	219517	AF4060	531452	AF1843	1671501	-	524762	FF5074	173171	LF3376	1770813	AF27692	153468	HF6162
L75 / L 76	1958-70	D11	-	-	-	-	-	-	-	-	-	-	-	-	153468	HF6162
L75 / L76	1958-70	D11	-	-	-	-	-	-	62325	FF4033	-	-	1770813	AF27692	153468	HF6162
P 93 (H/HS)	1995 →	DS9	365729	AF4631	534157 534158	-	1671501	-	524762	FF5074	173171	LF3376	1770813	AF27692	153468	HF6162
P230	2004 →	DC9-19	1485592	AF27857	-	-	1518512	FS19551	1873018	FF5683	1117285	LF3730	1770813	AF27692	153468	HF6162
P230	2006 →	DC9-13	1485592	AF27857	-	-	1518512	FS19551	1873018	FF5683	1117285	LF3730	1770813	AF27692	153468	HF6162

AGRALE

FORD

FOTON

INTERNATIONAL

IVECO

MAN

MERCEDES-BENZ

SCANIA

SHACMAN

VOLKSWAGEN

VOLVO

Produtos Fleetguard
SCANIA



Modelo	Ano	Motor	Filtro de Ar				Filtro Separador de Combustível		Filtro de Combustível		Filtro Lubrificante		Filtro de Ar-Condicionado		Filtro da Direção Hidráulica	
			Elemento Primário		Elemento Secundário		Número Scania	Número Fleetguard	Número Scania	Número Fleetguard	Número Scania	Número Fleetguard	Número Scania	Número Fleetguard	Número Scania	Número Fleetguard
			Número Scania	Número Fleetguard	Número Scania	Número Fleetguard										
P250	2010 →	DC09 109 250 cv	-	-	-	-	-	-	-	-	-	1770813	AF27692	153468	HF6162	
P270	2004 →	DC9-20	1485592	AF27857	-	-	1518512	FS19551	1873018	FF5683	1117285	LF3730	1770813	AF27692	153468	HF6162
P270	2006 →	DC9-12	1485592	AF27857	-	-	1518512	FS19551	1873018	FF5683	1117285	LF3730	1770813	AF27692	153468	HF6162
P310	2004 →	DC9-21	1485592	AF27857	1484437	AF26678	1518512	FS19551	1873018	FF5683	1117285	LF3730	1770813	AF27692	153468	HF6162
P310	2006 →	DC9-11	1485592	AF27857	-	-	1518512	FS19551	1873018	FF5683	1117285	LF3730	1770813	AF27692	153468	HF6162
P340	2004 →	DC11-03	1485592	AF27857	-	-	1518512	FS19551	1411894	FF5424	1117285	LF3730	1770813	AF27692	153468	HF6162
P340	2006 →	DC11-08	1485592	AF27857	1485592	AF27857	1518512	FS19551	1873018	FF5683	1117285	LF3730	1770813	AF27692	153468	HF6162
P360	2010 →	DC13 114 360 cv	1485592	AF27857	1484437	AF26678	1518512	FS19551	1518512	FS19551	1742032 1742037	LF17486	1770813	AF27692	153468	HF6162
P420	2004 →	DC12-01	1485592	AF27857	-	-	1518512	FS19551	1372444	FF5297	1117285	LF3730	1770813	AF27692	153468	HF6162
P420	2006 →	DC12-06	1485592	AF27857	-	-	1518512	FS19551	1873018	FF5683	1117285	LF3730	1770813	AF27692	153468	HF6162
R/T 140 LK/LKS	1977 →	DS14	531050	AF1802	534157 534158	-	1671501	-	524762	FF5074	173171	LF3376	-	-	153468	HF6162
R/T 141 LK/LKS/LKT	1977 →	DS14	531050	AF1802	534157 534158	-	-	-	524762	FF5074	173171	LF3376	1770813	AF27692	153468	HF6162
R380	2005 →	DC11-04	1485592 1423414	AF27857 -	-	-	1518512	FS19551	1411894	FF5424	1117285	LF3730	1770813	AF27692	153468	HF6162
R420	2005 →	DC12-01	1485592 1423414	AF27857 -	-	-	1518512	FS19551	1411894	FF5424	1117285	LF3730	1770813	AF27692	153468	HF6162
R420	2006 →	DC12-06	1485592 1423414	AF27857 -	-	-	1518512	FS19551	1411894	FF5424	1117285	LF3730	1770813	AF27692	153468	HF6162
R420 Highline	2008 →	DC12-06	-	-	-	-	1518512	FS19551	1873018	FF5683	-	-	1770813	AF27692	153468	HF6162
R440	2006 →	DT12-18	1485592 1423414	AF27857 -	-	-	1518512	FS19551	1411894	FF5424	1117285	LF3730	1770813	AF27692	153468	HF6162
R440 Highline	2008 →	DT12-18	-	-	-	-	1518512	FS19551	1873018	FF5683	-	-	1770813	AF27692	153468	HF6162
R470	2006 →	DT12-06	1485592 1423414	AF27857 -	-	-	-	-	1873018	FF5683	1117285	LF3730	1770813	AF27692	153468	HF6162
R470 Highline	2008 →	DT12-06	-	-	-	-	1518512	FS19551	1873018	FF5683	1117285	LF3730	1770813	AF27692	153468	HF6162
R480	2005 →	DC16-02	1485592 1423414	AF27857 -	-	-	1518512	FS19551	1873018	FF5683	1117285	LF3730	1770813	AF27692	153468	HF6162
R500	2006 →	DC16-04	1485592 1423414	AF27857 -	-	-	1518512	FS19551	1873018	FF5683	-	-	1770813	AF27692	153468	HF6162
R500 Highline	2008 →	DC16-04	-	-	-	-	-	-	-	-	-	-	1770813	AF27692	153468	HF6162

AGRALE

FORD

FOTON

INTERNATIONAL

IVECO

MAN

MERCEDES-BENZ

SCANIA

SHACMAN

VOLKSWAGEN

VOLVO

Produtos Fleetguard **SHACMAN**



Modelo	Ano	Motor	Filtro de Ar				Filtro Separador de Combustível		Filtro Lubrificante		Filtro de Ureia		Filtro de Ar-Condicionado	
			Elemento Primário		Elemento Secundário		Número Shacman	Número Fleetguard	Número Shacman	Número Fleetguard	Número Shacman	Número Fleetguard	Número Shacman	Número Fleetguard
			Número Shacman	Número Fleetguard	Número Shacman	Número Fleetguard								
DT 385 6x4	2013	Cummins ISM11 385	-	AF25812	-	AF25813	-	FS1003	-	LF9080	-	AS2500	-	AF25630
LT 385 6x4	2013	Cummins ISM11 385	-	AF25812	-	AF25813	-	FS1003	-	LF9080	-	AS2500	-	AF25630
TT 385 6x2	2014	Cummins ISM11 385	-	-	-	-	-	-	-	LF9080	-	AS2500	-	-
TT 385 6x4	2013	Cummins ISM11 385	-	AF25812	-	AF25813	-	FS1003	-	LF9080	-	AS2500	-	AF25630
TT 385 4x2	2013	Cummins ISM11 385	-	AF25812	-	AF25813	-	FS1003	-	LF9080	-	AS2500	-	AF25630
TT 385-420 8x4	2014	Cummins ISM11 385/420	-	-	-	-	-	-	-	LF9080	-	AS2500	-	-
TT 420 6x4	2013	Cummins ISM11 420	-	AF25812	-	AF25813	-	FS1003	-	LF9080	-	AS2500	-	AF25630
TT 440 6x4	2014	Cummins ISM11 440	-	-	-	-	-	-	-	LF9080	-	AS2500	-	-

AGRALE

FORD

FOTON

INTERNATIONAL

IVECO

MAN

MERCEDES-BENZ

SCANIA

SHACMAN

VOLKSWAGEN

VOLVO

Produtos Fleetguard VOLKSWAGEN



Modelo	Ano	Motor	Filtro de Ar				Filtro Separador de Combustível		Filtro de Combustível		Filtro Lubrificante		Filtro de Ureia		Filtro da Direção Hidráulica		Filtro Secador de Freio	
			Elemento Primário		Elemento Secundário		Número Volkswagen	Número Fleetguard	Número Volkswagen	Número Fleetguard	Número Volkswagen	Número Fleetguard	Número Volkswagen	Número Fleetguard	Número Volkswagen	Número Fleetguard	Número Volkswagen	Número Fleetguard
			Número Volkswagen	Número Fleetguard	Número Volkswagen	Número Fleetguard												
5140	2005	MWM 4.8	2R0129620D	AF25075	2R0129620C	AF1840	2R0127177C	-	-	-	-	-	-	T11145397	HF6162	2TB607439	AF27817	
5150	2012	Cummins ISF 3.8L	2R0129620D	AF25075	-	-	2R0127177J	-	2P0127177	FF5706	2P0115403	LF16352	-	-	T11145397	HF6162	2TB607439	AF27817
8120	2000	MWM 4.10 TCA	2R0129620D	AF25075	2R0129620C	AF1840	2R0127177	FS1105	2R0127177A	FF5934	2R0115561A	LF4054	-	-	T11145397	HF6162	2TB607439	AF27817
8150	2000	MWM 4.10 TCA	2R0129620D	AF25075	2R0129620C	AF1840	2R0127177	FS1105	2R0127177A	FF5934	2R0115561A	LF4054	-	-	T11145397	HF6162	2TB607439	AF27817
8150	2003	MWM 4.07 TCA	2R0129620D	AF25075	2R0129620C	AF1840	2R0127177	FS1105	-	-	-	-	-	-	T11145397	HF6162	2TB607439	AF27817
8150 E (Delivery)	2005	MWM 4.08 TCE	2R0129620D	AF25075	2R0129620C	AF1840	-	-	-	-	-	-	-	-	T11145397	HF6162	2TB607439	AF27817
8160	2012	Cummins ISF 3.8L	2R0129620D	AF25075	-	-	2R0127177J	-	2P0127177	FF5706	2P0115403	LF16352	-	-	T11145397	HF6162	2TB607439	AF27817
9160	2012	Cummins ISF 3.8L	2R0129620D	AF25075	-	-	2R0127177J	-	2P0127177	FF5706	2P0115403	LF16352	-	-	T11145397	HF6162	2TB607439	AF27817
10160	2012	Cummins ISF 3.8L	2R0129620D	AF25075	-	-	2R0127177J	-	2P0127177	FF5706	2P0115403	LF16352	-	-	T11145397	HF6162	2TB607439	AF27817
13180	2000-13	MWM 6.10 TCA	2S0129620B	AF25997	2S0129620C	AF26211	2R0127177	FS1105	-	-	-	-	-	-	T11145397	HF6162	2TB607439	AF27817
13180 Constellation	2006-12	MWM 4.12 TCE	2R0129620	AF27978	-	-	2T2.201.512.A	-	2R0127177E	FF5935	2R0115561A	LF4054	-	-	T11145397	HF6162	-	-
13180 Worker	2003-14	MWM 4.12 TCE	2S0129620B	AF25997	2S0129620C	AF26211	2R0.201.512.E	-	2R0127177E	FF5935	2R0115561A	LF4054	-	-	T11145397	HF6162	2TB607439	AF27817
13190	2012	MAN D08 34 4.6L	2R0129620	AF27978	-	-	2R0127177J	-	2V5201512	FF5629	07W115436A	LF3769	-	-	T11145397	HF6162	2TB607439	AF27817
15180	2000	MWM 6.10 TCA	2S0129620B	AF25997	2S0129620C	AF26211	2R0127177	FS1105	-	-	2S0115561	LF3346	-	-	T11145397	HF6162	-	-
15180 Constellation	2006-12	MWM 4.12 TCE	2R0129620	AF27978	-	-	2T2.201.512.A	-	2R0127177E	FF5935	2R0115561A	LF4054	-	-	T11145397	HF6162	-	-
15180 Worker	2005	MWM 4.12 TCE	2S0129620B	AF25997	2S0129620C	AF26211	2R0.201.512.E	-	2R0127177E	FF5935	2R0115561A	LF4054	-	-	T11145397	HF6162	2TB607439	AF27817
15190	2012	MAN D08 34 4.6L	2R0129620	AF27978	-	-	2R0127177J	-	2V5201512	FF5629	07W115436A	LF3769	-	-	T11145397	HF6162	2TB607439	AF27817
17190	2012	MAN D08 34 4.6L	2R0129620	AF27978	-	-	2R0127177J	-	2V5201512	FF5629	07W115436A	LF3769	-	-	T11145397	HF6162	2TB607439	AF27817
17220	1991	Cummins 6CTAA	2S0129607	-	-	-	2TD.127.401.B	FS1015	2RK127177A	FF5052	TJG115561	LF3000	-	-	T11145397	HF6162	-	-
17220	2000	Cummins 6BTAA	2S0129620B	AF25997	2S0129620C	AF26211	2R0127177	FS1105	2RK127177A	FF5052	TRA115561	LF3349	-	-	-	-	-	-
17.250 T	2003	ISBe6	2S0129620B	AF25997	2S0129620C	AF26211	2R0127177C 2R0127177D	-	2R0127177B	FF5421	2R0115403	LF16015	-	-	T11145397	HF6162	2TB607439	AF27817
17280	2012	MAN D08 36 6.9L	2S0129620B	AF25997	2S0129620C	AF26211	2R0127177J	-	2V5201512	FF5629	07W115436A	LF3769	-	-	T11145397	HF6162	2TB607439	AF27817
17330	2012	Cummins ISL 8.9L	2S0129620B	AF25997	2S0129620C	AF26211	2T2127177D	FS19727 G	2T2127177B	FF5488	2T0115561	LF9009	2Z0616787	AS2500	T11145397	HF6162	2TB607439	AF27817
19320	2005	Cummins ISC 320	2S0129620B	AF25997	2S0129620C	AF26211	2R0127177C	-	-	-	2T0115561	LF9009	-	-	T11145397	HF6162	2TB607439	AF27817
19370	2007	MWM Int. NGD 370	2S0129620B	AF25997	2S0129620C	AF26211	2R0127177C	-	2U2127177	FS19684E	2T2115561-A 2T2115561	LF16162 LF16161	-	-	T11145397	HF6162	2TB607439	AF27817
24220	2000	Cummins 6CTAA	2S0129620B	AF25997	2S0129620C	AF26211	2R0127177	FS1105	2RK127177A	FF5052	TJG115561	LF3000	-	-	T11145397	HF6162	-	-
24250	2003	ISBe6	2S0129620B	AF25997	2S0129620C	AF26211	2R0127177J	-	2R0127177B	FF5421	2R0115403	LF16015	-	-	T11145397	HF6162	-	-
24280	2012	MAN D08 36 6.9L	2S0129620B	AF25997	2S0129620C	AF26211	2R0127177J	-	2V5201512	FF5629	07W115436A	LF3769	-	-	T11145397	HF6162	2TB607439	AF27817
24320	2009	Cummins ISC Turbo Intercooler	2S0129620B	AF25997	2S0129620C	AF26211	2R0.201.512.E	-	2T2127177B	FF5488	2T0115561	LF9009	-	-	T11145397	HF6162	2TB607439	AF27817
24330	2012	Cummins ISL 8.9L	2S0129620B	AF25997	2S0129620C	AF26211	2T2127177D	FS19727 G	2T2127177B	FF5488	2T0115561	LF9009	2Z0616787	AS2500	T11145397	HF6162	2TB607439	AF27817
25320	2008	Cummins ISC Turbo Intercooler	2S0129620B	AF25997	2S0129620C	AF26211	2TD.127.401.B 2S0.201.511	-	2T2127177B	FF5488	2T0115561	LF9009	-	-	T11145397	HF6162	2TB607439	AF27817
25370	2007	MWM Int. NGD 370	2S0129620B	AF25997	2S0129620C	AF26211	2R0127177C	-	2U2127177	FS19684E	2T2115561-A 2T2115561	LF16162 LF16161	-	-	T11145397	HF6162	2TB607439	AF27817
25390	2012	Cummins ISL 8.9L	2S0129620B	AF25997	2S0129620C	AF26211	2T2127177D	FS19727 G	2T2127177B	FF5488	2T0115561	LF9009	2Z0616787	AS2500	T11145397	HF6162	2TB607439	AF27817
26220	2001	Cummins 6CTAA	2S0129620B	AF25997	2S0129620C	AF26211	2R0127177	FS1105	2RK127177A	FF5052	TJG115561	LF3000	-	-	T11145397	HF6162	2TB607439	AF27817
26260	2002	Cummins 6CTAA	2S0129620B	AF25997	2S0129620C	AF26211	2R0127177	FS1105	2RK127177A	FF5052	TJG115561	LF3000	-	-	T11145397	HF6162	-	-
26280	2012	MAN D08 36 6.9L	2S0129620B	AF25997	2S0129620C	AF26211	2R0127177J	-	2V5201512	FF5629	07W115436A	LF3769	-	-	T11145397	HF6162	2TB607439	AF27817
26390	2012	Cummins ISL 8.9L	2S0129620B	AF25997	2S0129620C	AF26211	2T2127177D	FS19727 G	2T2127177B	FF5488	2T0115561	LF9009	2Z0616787	AS2500	T11145397	HF6162	2TB607439	AF27817

Produtos Fleetguard VOLKSWAGEN



Modelo	Ano	Motor	Filtro de Ar				Filtro Separador de Combustível		Filtro de Combustível		Filtro Lubrificante		Filtro de Ureia		Filtro da Direção Hidráulica		Filtro Secador de Freio	
			Elemento Primário		Elemento Secundário		Número Volkswagen	Número Fleetguard	Número Volkswagen	Número Fleetguard	Número Volkswagen	Número Fleetguard	Número Volkswagen	Número Fleetguard	Número Volkswagen	Número Fleetguard	Número Volkswagen	Número Fleetguard
			Número Volkswagen	Número Fleetguard	Número Volkswagen	Número Fleetguard												
31260	2004 →	Cummins 6CTAA	2S0129620B	AF25997	2S0129620C	AF26211	2R0127177	FS1105	2RK127177A	FF5052	TJG115561	LF3000	-	-	T11145397	HF6162	2TB607439	AF27817
31280	2012 →	MAN D08 36 6.9L	2S0129620B	AF25997	2S0129620C	AF26211	2R0127177J	-	2V5201512	FF5629	07W115436A	LF3769	-	-	T11145397	HF6162	2TB607439	AF27817
31310	2004 →	Cummins 6CTAA	2S0129620B	AF25997	2S0129620C	AF26211	2R0127177	FS1105	2RK127177A	FF5052	TJG115561	LF3000	-	-	T11145397	HF6162	-	-
31330	2012 →	Cummins ISL 8.9L	2S0129620B	AF25997	2S0129620C	AF26211	2T2127177D	FS19727 G	2T2127177B	FF5488	2T0115561	LF9009	2Z0616787	AS2500	T11145397	HF6162	2TB607439	AF27817
31390	2012 →	Cummins ISL 8.9L	2S0129620B	AF25997	2S0129620C	AF26211	2T2127177D	FS19727 G	2T2127177B	FF5488	2T0115561	LF9009	2Z0616787	AS2500	T11145397	HF6162	2TB607439	AF27817
17220 T	2000 →	Cummins 6CTAA	2S0129620B	AF25997	2S0129620C	AF26211	2R0127177	FS1105	2RK127177A	FF5052	TJG115561	LF3000	-	-	T11145397	HF6162	-	-
17250 T	2003 →	ISBe6	2S0129620B	AF25997	2S0129620C	AF26211	2R0127177C 2R0127177D	-	2R0127177B	FF5421	2R0115403	LF16015	-	-	T11145397	HF6162	2TB607439	AF27817
26260 E ca	2005 →	MWM 6.12 TCE	2S0129620B	AF25997	2S0129620C	AF26211	-	-	2R0127177E	FF5935	2S0115561	LF3346	-	-	T11145397	HF6162	2TB607439	AF27817
31260 E (Worker)	2005 →	MWM 6.12 TCE	2S0129620B	AF25997	2S0129620C	AF26211	2R0127177	FS1105	-	-	2S0115561	LF3346	-	-	T11145397	HF6162	2TB607439	AF27817
31320 E (Constellation 6x4)	2007 →	Cummins ISC	2S0129620B	AF25997	-	-	-	-	2T2127177B	FF5488	2T0115561	LF9009	-	-	T11145397	HF6162	2TB607439	AF27817
31370 E (Constellation 6x4)	2007 →	MWM Int. NGD 370	2S0129620B	AF25997	2S0129620C	AF26211	2R0127177C	-	2U2127177	FS19684E	2T2115561-A 2T2115561	LF16162 LF16161	-	-	T11145397	HF6162	2TB607439	AF27817

AGRALE

FORD

FOTON

INTERNATIONAL

IVECO

MAN

MERCEDES-BENZ

SCANIA

SHACMAN

VOLKSWAGEN

VOLVO

Produtos Fleetguard VOLVO



Modelo	Ano	Motor	Filtro de Ar				Filtro Separador de Combustível		Filtro de Combustível		Filtro Lubrificante		Filtro de Ar-Condicionado		Filtro da Direção Hidráulica		Filtro Secador de Freio	
			Elemento Primário		Elemento Secundário		Número Volvo	Número Fleetguard	Número Volvo	Número Fleetguard	Número Volvo	Número Fleetguard	Número Volvo	Número Fleetguard	Número Volvo	Número Fleetguard	Número Volvo	Número Fleetguard
			Número Volvo	Número Fleetguard	Número Volvo	Número Fleetguard												
FH 12 340	2001 →	D12C	8149961	AF25632	-	-	-	-	8193841	FF5272	466634	LF3321	217 58906	AF25305	349619	HF6162	TB1374X	AF27817
FH 12 340	2003 →	D12D	8149961	AF25632	-	-	-	-	20976003	FF5507	466634	LF3321	217 58906	AF25305	349619	HF6162	TB1374X	AF27817
FH 12 340	1993-02	D12A/B/C/D	1665898	AF25238	1665937	AF25317	3838852 8159975	FS1207 (penta) FS19532 (BM)	8193841	FF5272	477556	LF3654	20409908	AF55712	349619	HF6162	TB1374X	AF27817
FH 12 380	1994 →	D12A	1665898	AF25238	1665937	AF25317	3838852 8159975	FS1207 (penta) FS19532 (BM)	8193841	FF5272	477556	LF3654	20409908	AF55712	349619	HF6162	TB1374X	AF27817
FH 12 380	1998 →	D12C	1665898	AF25238	-	-	21380488	FS19920	8193841	FF5272	466634	LF3321	217 58906	AF25305	349619	HF6162	TB1374X	AF27817
FH 12 380	2003 →	D12D	8149961	AF25632	1665937	AF25317	20879806 20381204 20514654	FS19966 FS19734 FS19735	20976003 21879886	FF5507 FF254	-	LF3758	20409908	AF55712	349619	HF6162	TB1374X	AF27817
FH 12 400	2006 →	D13A	8149961	AF25632	-	-	-	FS19551	20976003	FF5507	478362	LF3675	20409908	AF55712	349619	HF6162	TB1374X	AF27817
FH 12 420	1996 →	D12A	1665898	AF25238	1665937	AF25317	3838852 8159975	FS1207 (penta) FS19532 (BM)	8193841	FF5272	477556	LF3654	20409908	AF55712	349619	HF6162	TB1374X	AF27817
FH 12 420	1998 →	D12C	-	-	-	-	-	FS19551	8193841	FF5272	466634	LF3321	20409908	AF55712	349619	HF6162	TB1374X	AF27817
FH 12 420	2003 →	D12D	8149961	AF25632	1665937	AF25317	20879806 20381204 20514654	FS19966 FS19734 FS19735	20976003 21879886	FF5507 FF254	-	LF3758	217 58906	AF25305	349619	HF6162	TB1374X	AF27817
FH 12 440	2006 →	D13A	8149961	AF25632	-	-	-	-	20976003	FF5507	478362	LF3675	20409908	AF55712	349619	HF6162	TB1374X	AF27817
FH 12 460	2004 →	D12D	8149961	AF25632	1665937	AF25317	20879806 20381204 20514654	FS19966 FS19734 FS19735	20976003 21879886	FF5507 FF254	-	LF3758	20409908	AF55712	349619	HF6162	TB1374X	AF27817
FH 12 480	2006 →	D13A	8149961	AF25632	-	-	21380488	FS19920	20976003	FF5507	478362	LF3675	20409908	AF55712	349619	HF6162	TB1374X	AF27817
FH 12 520	2006 →	D13A	8149961	AF25632	-	-	21380488	FS19920	20976003	FF5507	478362	LF3675	20409908	AF55712	349619	HF6162	TB1374X	AF27817
FH 420	2009 →	D13C-420	21115483	AF27834	21115501	-	213 80488	FS19920	204 05160	FF5507	-	-	217 58906	AF25305	349619	HF6162	-	-
FH 420	2009 →	D13C-420	21834205	AF27970	-	-	213 80488	FS19920	204 05160	FF5507	478736	LF3675	217 58906	AF25305	-	-	-	-
FH 460	2013	D13K	21834205	AF27970	21115501	-	21380475 21380488	FS19966 FS19920	20976003 21879886	FF5507 FF254	21170573 21170569	LF17502 LF17503	82354791	-	349619	HF6162	-	-
FH 460	2009	D13C	21115483	AF27970	21115501	-	21380475 21380488	FS19966 FS19920	20976003 21879886 21064484	FF5507 FF254 FF5820	478362	LF3675	20409908	AF55712	349619	HF6162	-	-
FH 460	2013	D13C	21834205	AF27970	21115501	-	21380475 21380488	FS19966 FS19920	20976003 21879886	FF5507 FF254	21170573 21170569	LF17502 LF17503	82354791	-	349619	HF6162	-	-
FH 540	2013	D13C	21834205	AF27970	21115501	-	21380475 21380488	FS19966 FS19920	20976003 21879886	FF5507 FF254	21170573 21170569	LF17502 LF17503	82354791	-	349619	HF6162	-	-
FH 540	2009	D13C	21834205	AF27970	21115501	-	21380475 21380488	FS19966 FS19920	20976003 21879886 21064484	FF5507 FF254 FF5820	478362	LF3675	20409908	AF55712	349619	HF6162	-	-
FH 540	2013	D13K	21834205	AF27970	21115501	-	21380475 21380488	FS19966 FS19920	20976003 21879886	FF5507 FF254	21170573 21170569	LF17502 LF17503	82354791	-	349619	HF6162	-	-
FH 540	2013	D16G	21716424	AF26472M AF26163M	-	-	20998367	FS19735	21879886	FF254	21170573 21170569	LF17502 LF17503	82354791	-	349619	HF6162	-	-
FM 12 340	2001 →	D12C	8149961	AF25632	-	-	-	FS19551	8193841	FF5272	466634	LF3321	20409908	AF55712	349619	HF6162	TB1374X	AF27817
FM 12 340	2003 →	D12D	8149961	AF25632	-	-	-	-	20976003	FF5507	466634	LF3321	20409908	AF55712	349619	HF6162	TB1374X	AF27817
FM 12 380	1998 →	D12C	21834199	AF25631	-	-	-	FS19551	8193841	FF5272	466634	LF3321	217 58906	AF25305	349619	HF6162	TB1374X	AF27817
FM 12 380	2003 →	D12D	21834199	AF25631	-	-	-	FS19551	20976003	FF5507	466634	LF3321	217 58906	AF25305	349619	HF6162	TB1374X	AF27817
FM 12 400	2006 →	D13A	218 34199	AF25631	-	-	-	-	20976003	FF5507	478362	LF3675	217 58906	AF25305	349619	HF6162	TB1374X	AF27817
FM 12 400	2006 →	D13A	21834199	AF25631	21115501	-	21380475 21380488	FS19966 FS19920	20976003	FF5507	21170573 21170569	LF17502 LF17503	217 58906	AF25305	349619	HF6162	TB1374X	AF27817
FM 12 420	1998 →	D12C	218 34199	AF25631	-	-	-	FS19551	8193841	FF5272	478362	LF3675	217 58906	AF25305	349619	HF6162	TB1374X	AF27817
FM 12 420	2003 →	D12D	21834199	AF25631	-	-	-	-	20976003	FF5507	466634	LF3321	217 58906	AF25305	349619	HF6162	TB1374X	AF27817

AGRALE

FORD

FOTON

INTERNATIONAL

IVECO

MAN

MERCEDES-BENZ

SCANIA

SHACMAN

VOLKSWAGEN

VOLVO

Produtos Fleetguard VOLVO



Modelo	Ano	Motor	Filtro de Ar				Filtro Separador de Combustível		Filtro de Combustível		Filtro Lubrificante		Filtro de Ureia		Filtro de Ar-Condicionado		Filtro da Direção Hidráulica		Filtro Secador de Freio			
			Elemento Primário		Elemento Secundário		Número Volvo	Número Fleetguard	Número Volvo	Número Fleetguard	Número Volvo	Número Fleetguard	Número Volvo	Número Fleetguard	Número Volvo	Número Fleetguard	Número Volvo	Número Fleetguard	Número Volvo	Número Fleetguard	Número Volvo	Número Fleetguard
			Número Volvo	Número Fleetguard	Número Volvo	Número Fleetguard																
FM 12 440	2006 →	D13A	218 34199	AF25631	-	-	213 80488	FS19920	204 05160	FF5507	478736	LF3675	-	-	217 58906	AF25305	-	-	TB1374X	AF27817		
FM 12 440	2006 →	D13A	218 34199	AF25631	-	-	-	-	20976003	FF5507	478362	LF3675	-	-	217 58906	AF25305	349619	HF6162	TB1374X	AF27817		
FM 12 460	2004 →	D12D	21834199	AF25631	-	-	-	-	20976003	FF5507	466634	LF3321	-	-	217 58906	AF25305	349619	HF6162	TB1374X	AF27817		
FM 12 480	2006 →	D13A	218 34199	AF25631	-	-	213 80488	FS19920	204 05160	FF5507	-	-	-	-	-	-	-	-	TB1374X	AF27817		
FM 12 480	2006 →	D13A	218 34199	AF25631	-	-	-	-	20976003	FF5507	466634	LF3321	-	-	217 58906	AF25305	349619	HF6162	TB1374X	AF27817		
FM 12 520	2006 →	D13A	218 34199	AF25631	-	-	213 80488	FS19920	204 05160	FF5507	478736	LF3675	-	-	217 58906	AF25305	-	-	TB1374X	AF27817		
FM 370 Tractor	2008 →	D13A400	-	-	-	-	213 80475	FS19966	204 05160	FF5507	478736	LF3675	217 58906	AF25305	-	-	-	-	TB1374X	AF27817		
FM 370 Tractor	2008 →	D13A	21834199	AF25631	-	AF26162	20879806	FS19966	20976003	FF5507	478362	LF3675	-	-	-	-	349619	HF6162	-	-		
N10 H/XH/XHT	1984 →	TD101F/TD101G	-	AF4720	-	-	3838852	FS1207	-	FF5052	466634	LF3321	-	-	-	-	349619	HF6162	-	-		
N1016	1983 →	TD100G	-	AF4720	-	-	3838852	FS1207	-	FF5052	466634	LF3321	-	-	-	-	349619	HF6162	-	-		
N1020	1980 →	TD100A/TD100G	-	AF4720	-	-	3838852	FS1207	-	FF5052	466634	LF3321	-	-	-	-	349619	HF6162	-	-		
N1033	1983 →	TD100G	-	AF4720	-	-	3838852	FS1207	-	FF5052	466634	LF3321	-	-	-	-	349619	HF6162	-	-		
NH 12 340	2003 →	D12D	8149961	AF25632	-	-	-	-	20976003	FF5507	466634	LF3321	-	-	-	-	349619	HF6162	TB1374X	AF27817		
NH 12 380	2003 →	D12D	8149961	AF25632	-	-	-	-	20976003	FF5507	466634	LF3321	-	-	-	-	349619	HF6162	TB1374X	AF27817		
NH 12 420	2003 →	D12D	8149961	AF25632	-	-	-	-	20976003	FF5507	466634	LF3321	-	-	-	-	349619	HF6162	TB1374X	AF27817		
NH 12 460	2004 →	D12D	8149961	AF25632	-	-	-	-	20976003	FF5507	466634	LF3321	-	-	-	-	349619	HF6162	TB1374X	AF27817		
VM 260	2005 →	MWM7A260	20544738	AF27857	-	-	20741196	-	-	FF5935	466634	LF3321	-	-	-	-	-	-	TB1374X	AF27817		
VM 310	2005 →	MWM7A310	20544738	AF27857	-	-	20741196	-	-	FF5935	466634	LF3321	-	-	-	-	-	-	TB1374X	AF27817		
VM 15210	2005 →	MWM5A206	20544738	AF27857	-	-	20741196	-	-	FF5935	466634	LF3321	-	-	-	-	349619	HF6162	TB1374X	AF27817		

AGRALE

FORD

FOTON

INTERNATIONAL

IVECO

MAN

MERCEDES-BENZ

SCANIA

SHACMAN

VOLKSWAGEN

VOLVO



Cummins Filtration Brasil
Rua Narain Singh, 760
Guarulhos - São Paulo
Brasil - 07250-000

Para mais informações, visite:
www.cumminsfiltration.com.br
falecom@cummins.com

Curta nossa página e
mantenha-se informado:
facebook.com/cumminsbrasil

Consulte um distribuidor
Cummins de sua região

0800 CUMMINS
0800 286 6467

©2015 rev2 Cummins Filtration
Part number: LT36374