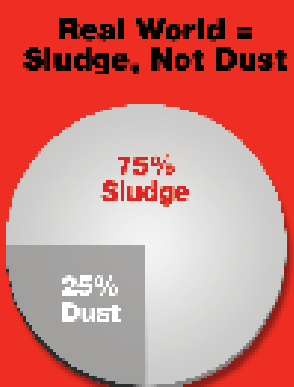


REAL™ World protection you can trust.

Only the Venturi meets or exceeds OEM specification CES10765.

REAL World Sludge – Not Dust.

The Venturi passes the required M11 High Soot Test, also recognized by API, proving REAL World contaminant capacity unlike competitors' filters which are only tested for dust capacity. Dust alone is irrelevant in REAL world lube systems!



REAL Sludge Control.

The Venturi includes REAL bypass filtration as required by OEM specs ensuring ONLY clean oil reaches the engine components. Using the unique internal flow achieved with the Venturi nozzle, the built-in stacked disc bypass media captures high amounts of sludge thus allowing the oil to continue being filtered through the full flow section without plugging.

REAL Cold Start Protection.

The Venturi is tested using specified cold start conditions ensuring that it provides protection to vital engine parts during cold starts.

REAL Reliability.

In addition to Real World testing, each filter is designed & tested using a battery of filtration industry test methods including ISO 4548-12, SAE J1858, SAE HS-J806 and ISO 2942.

REAL™ World Warranty.

REAL Warranty coverage that goes beyond the competition.

Providing customers the best warranty coverage in the industry is Cummins Filtration's ongoing promise as we partner to be your filtration supplier for life. As the only filtration manufacturer with a non-prorated warranty, Cummins Filtration guarantees to always be there after the sale. For detailed information on the **Cummins Filtration Warranty**, refer to the Cummins Filtration warranty brochure and statement, available online at cumminsfiltration.com.

Aftermarket Venturi Combo Models:

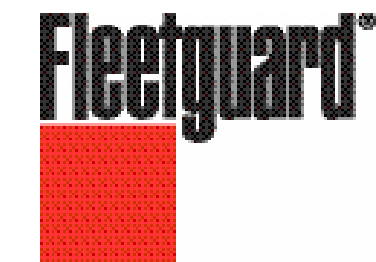
LF9000	Cummins	LF9035	International
LF9001	Cummins	LF9039	Cummins
LF9008	Hitachi	LF9325	Cummins
LF9009	Cummins	LF9333	Detroit Diesel
LF9010	John Deere	LF9548	Case
LF9018	Komatsu	LF9620	Detroit Diesel
LF9024	Cummins and Komatsu	LF9667	Caterpillar and Mack
LF9025	International	LF9691	Caterpillar
LF9027	Ford Powerstroke	LF9747	Komatsu
LF9028	Kubota	LF9691A	Caterpillar
LF9031	Cummins	LF9026	International
LF9032	John Deere	LF9931	GMC
LF9034	Cummins		



For more information, visit cumminsfiltration.com

LT36043
©2007 Cummins Filtration
Printed in U.S.A.

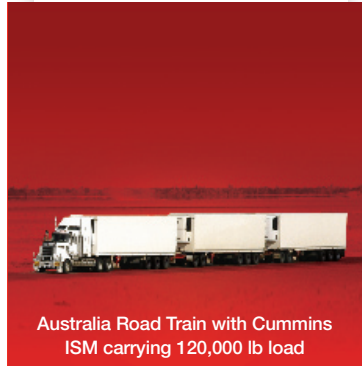
Filtration for the REAL World™



REAL™ Solution: Venturi™ Combo Lube Filter

Designed for REAL World Performance





REAL™ Bottom Line Results.

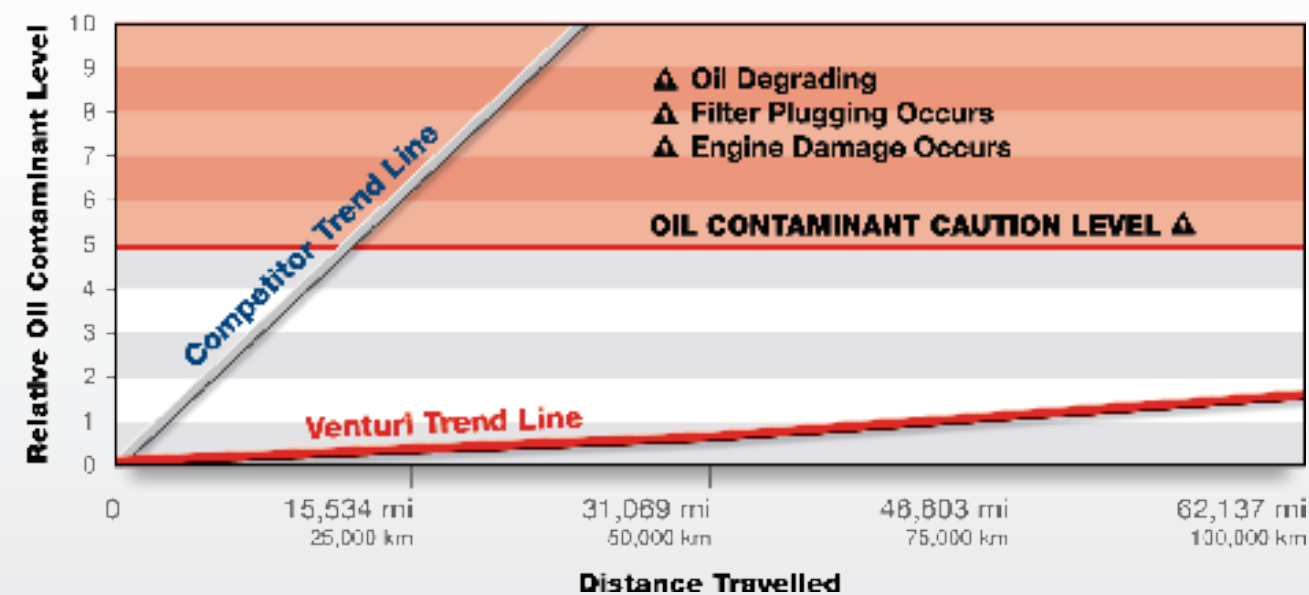
The Venturi delivers on extended maintenance intervals, better oil condition and improved engine life.

Severe Duty Australian Road Trains prove you can **SAFELY extend oil drain intervals** up to 2x longer for a maximum of 75,000 miles (121,000 km) *

REAL World results prove Venturi **reduces environmental waste** and **oil / filter consumption** by SAFELY extending oil drain intervals.

REAL World results prove Venturi reduces costs by **maintaining better oil condition** and **maximizing engine life**.

Oil Condition as Effected By Filter Type and Service Distance



Note: Chart based upon field trials conducted using the same application & conditions.
 * Maximum Oil Drain / Service Interval extension is dependant upon duty cycle, oil quality, idle time, engine model, application and model year.

REAL™ Performance.

Only the Venturi™ is designed for REAL World Performance.

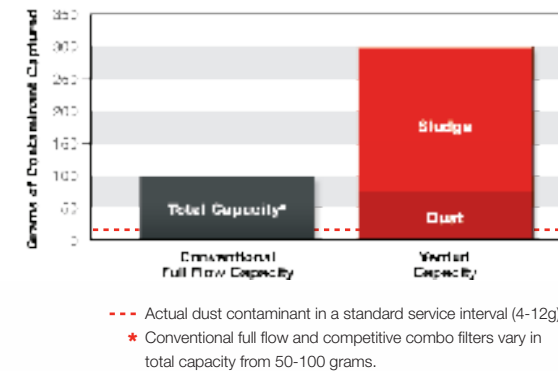


Stacked Disc ByPass Media

The patented Stacked Disc media allows for unmatched REAL World contaminant capacity:

3-4x more total capacity than full flow only and competitive "combo" filters.

Up to 5x more dust capacity than occurs in a standard service interval.



StrataPore™ Full Flow Media

StrataPore's multi-layers provide exactly the desired level of contaminant removal for maximum protection.

StrataPore's multi-layers maintains optimal efficiency and durability over filter life to support Extended Service Intervals.

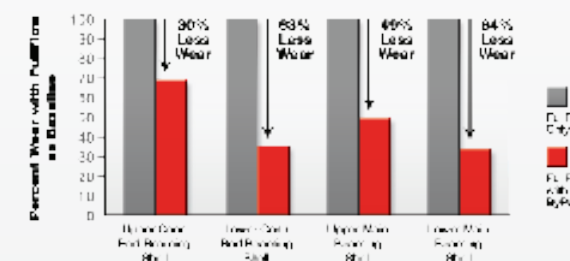
StrataPore's multi-layer design allows for maximum flow during cold start without compromise to engine protection.



Patented Venturi Nozzle

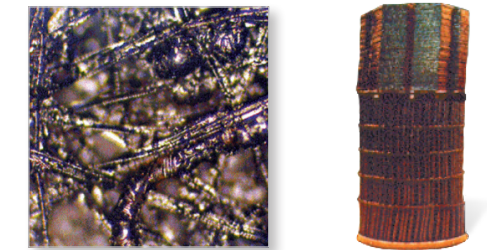
The Venturi Nozzle assures the maximum cold start oil flow, protecting valve train engine components such as cam lobes, cam followers and valve guides.

The Venturi Nozzle helps oil flow through the high capacity stacked disc media - proven to remove wear-causing sludge.



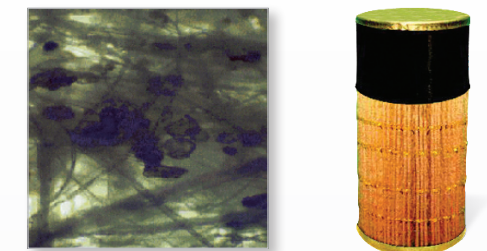
In the REAL™ World, how much Test Dust does your filter really see?

REAL World Testing ensures on-engine performance results you can count on.



REAL World Testing produces Real World results you can trust.

Bench Testing does NOT provide REAL World results.



Bench Testing produces results that are irrelevant in the REAL World.

Bench Testing Uses:

- Aviation Hydraulic Fluid
- ISO 12103-1, A3 Medium Test Dust
- No REAL World Extremes in Temperature
- No REAL World Extremes in Pressure
- No REAL World Oil Degradation
- No Water/Coolant/Condensation

REAL World testing PROVES only the Venturi™ provides the performance and protection you need in the REAL World.